

RAYSUITE[®]
APPLIANCE

Enterprise Application
Lifecycle Management
Suite

Release Notes
RaySuite Appliance 2.0



**Copyright © Raynet GmbH (Germany, Paderborn HRB 3524). All rights reserved.
Complete or partial reproduction, adaptation, or translation without prior written permission
is prohibited.**

Release Notes for release 2.0

Raynet and RayFlow are trademarks or registered trademarks of Raynet GmbH protected by patents in European Union, USA and Australia, other patents pending. Other company names and product names are trademarks of their respective owners and are used to their credit.

The content of this document is furnished for informational use only, is subject to change without notice, and should not be construed as a commitment by Raynet GmbH. Raynet GmbH assumes no responsibility or liability for any errors or inaccuracies that may appear in this document. All names and data used in examples are fictitious unless otherwise noted.

Any type of software or data file can be packaged for software management using packaging tools from Raynet or those publicly purchasable in the market. The resulting package is referred to as a Raynet package. Copyright for any third party software and/or data described in a Raynet package remains the property of the relevant software vendor and/or developer. Raynet GmbH does not accept any liability arising from the distribution and/or use of third party software and/or data described in Raynet packages. Please refer to your Raynet license agreement for complete warranty and liability information.

Raynet GmbH Germany
See our website for locations.

www.raynet.de

Contents

Introduction	4
Included Components	5
Product Matrix	6
Feature Highlights	7
Other features and improvements	10
System Requirements	11
Additional Information	13
Best practises	13
Support	14

Introduction

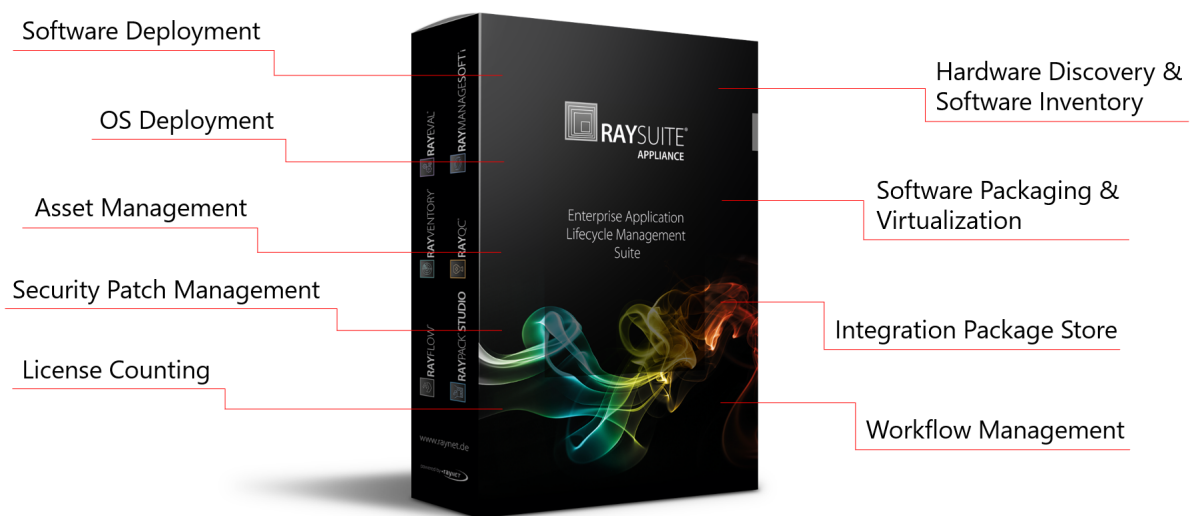
Small to medium businesses (SMBs) wish for a professional software management system, but often shy away because of the high costs associated with it. Just like large enterprises, SMBs need a safe and reliable way to manage and update their applications and operating systems. They also need to relieve their IT resources. Ideally, these businesses should not have to manually deal with their software management and their tools should be able to support the entire lifecycle of an application.

And like so many other enterprises, those businesses do not want to have to spend a fortune on consulting services at implementation or whenever an upgrade of the software management tool is required. SMBs want to be able to keep their existing infrastructure and at the same time possess a software management system that can grow with their company.

RaySuite Appliance is a perfect solution and contains pre-configured and pre-installed set of software components which are perfectly harmonized in a unique intuitive workflow allowing an easy and affordable use of the comprehensive RaySuite solution including RayManageSofti, a product originally designed for enterprise customers. Now, SMB customers can also enjoy numerous functions that facilitate the operation of their own IT infrastructure and allow it to be conveniently and reliably administrated.

On the one hand, RaySuite Appliance contains RayPack Studio and RayFlow functionality according to your needs and on the other hand it will contain pre-installed databases and setups for belonging data, certainly in parts customer specific and to be filled, e.g. consisting of *SQL Server Express* with Database Management System and Reporting functions, and Software Repository for the storage of packaged software.

Welcome to RaySuite Appliance 2.0.



Included Components

The RaySuite Appliance is a pre-configured and pre-installed set of software components that harmonize perfectly in a unique intuitive workflow.

RaySuite Appliance Components:

- Software Deployment, OS Deployment, Security Patch Management, Asset Management, License Counting – powered by RayManageSofti
- Discovery & Inventory – powered by RayVentory
- Workflow Management – powered by RayFlow
- Software Packaging – powered by RayPack Studio (RayEval, RayPack and RayQC)
- Standardised finished packages - powered by Package Store



Product Matrix

The following is a list of software and bundles pre-installed on this version of RaySuite Appliance.

Component	Purpose	Version
RayEval	Creation of software documentation	6.1.2943
RayFlow Client	Client frontend for the workflow module	6.0.12549
RayFlow Server	Server module for the workflow module	6.0.12549
RayManageSofti	Software and OS Deployment, Patch Management	11.4.0
RayPack	Software Packaging and Virtualization	6.1.14145
RayQC	Quality Assurance and Automation	6.1.7727
RaySAMi Connector	SAM Connector	1.2
RayVentory Portal	Hardware Discovery and Software Inventory	11.3.1631

Additionally, the following third-party products are pre-installed (please note that the list is not comprehensive):

Software	Version
Microsoft Windows Server*	2016 Standard
Microsoft SQL Server	2017 Express
Oracle Java*	8.0
Microsoft Windows Assessment and Deployment Kit (ADK) for Windows 8	1.0
Microsoft Orca	8.100.25984

License Requirements

Third-party product marked with asterisk (*) must be licensed separately. A license for them has to be provided by your organization.

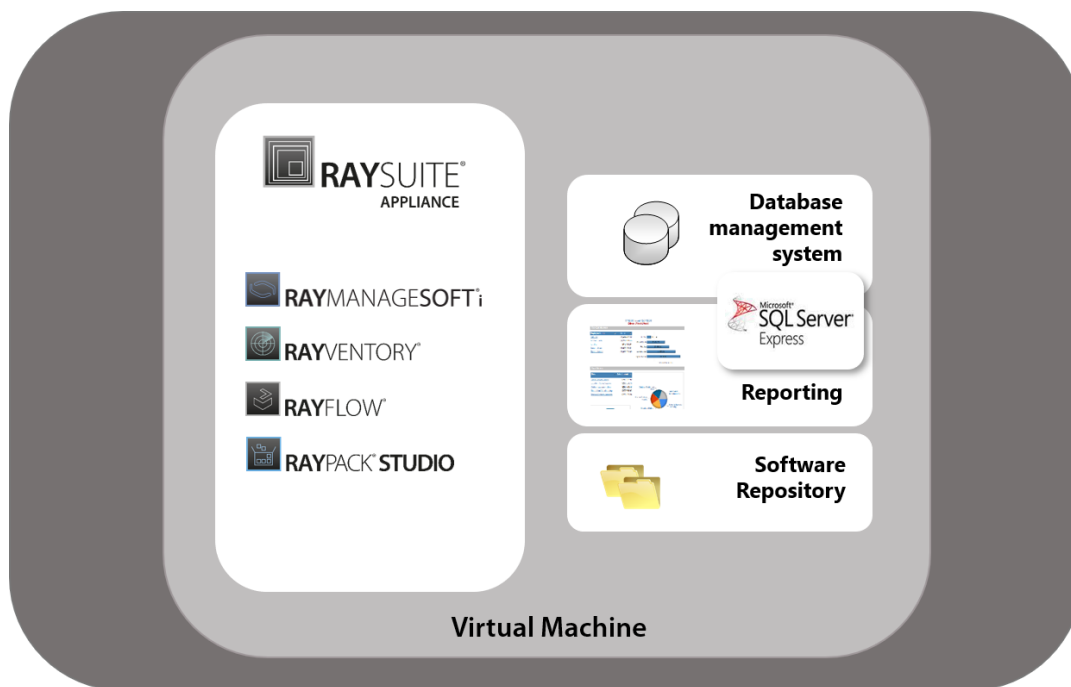
Feature Highlights

Appliance is now a One-Box solution with its own Non-AD Directory System RSA-102

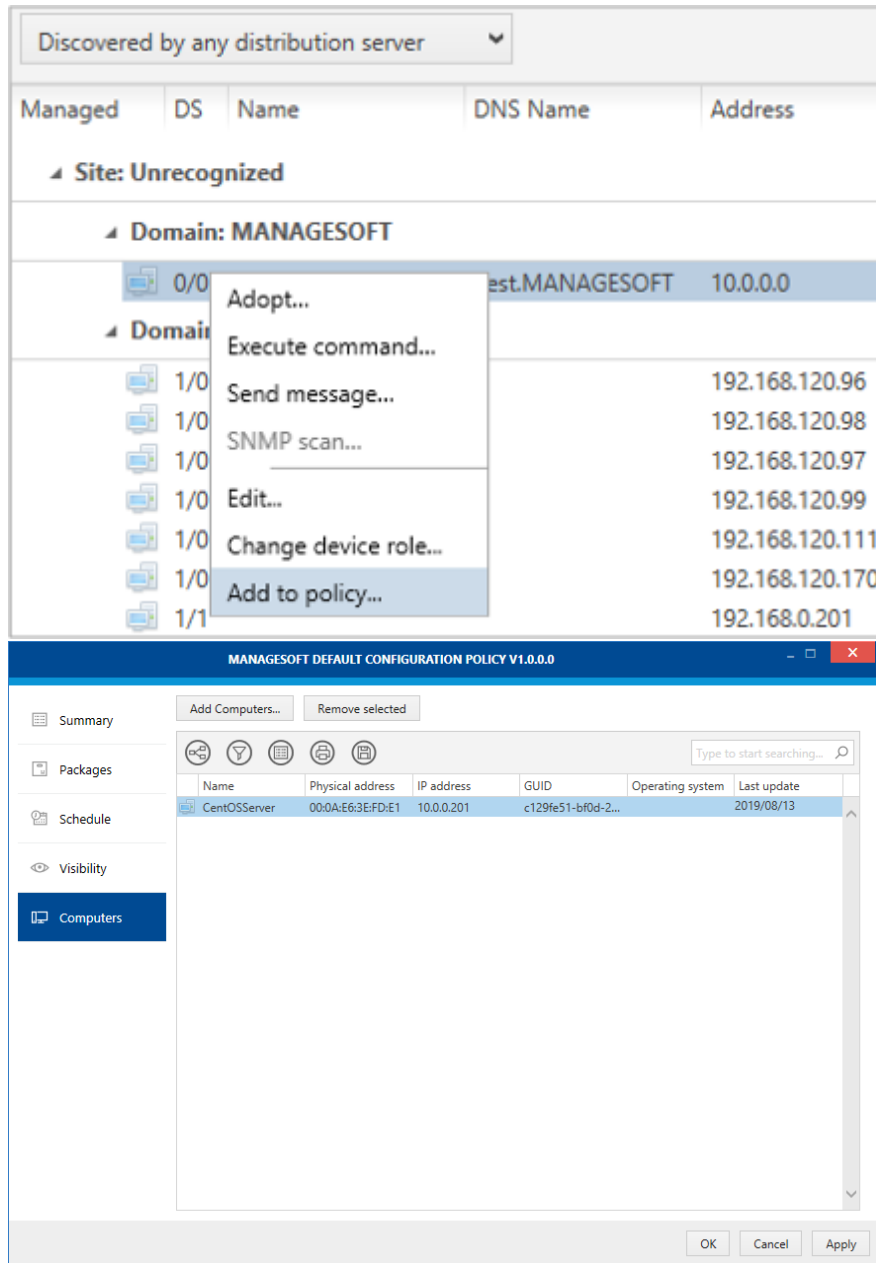
Prior to 2.0, RaySuite Appliance had always been a two-box solution, consisting of a core machine (RAYAPP) and data machine (RAYDATA). In this version, we decided to simplify the deployment and decrease hardware requirements by merging two subsystems into one box. This on the other hand has a better performance, lower footprint (RAM, CPU, disk space) and simplifies the deployment.

Additionally, this version of Appliance does not require anymore a black-box Active Directory. Instead, it uses our own black box directory system, which is fully contained and supports similar set of features which older appliances were only able to achieve with true Active Directory. Switching to a non-AD domain simplifies the deployment and integration with your infrastructure, and makes subsequent upgrades much easier.

Overall, setting up a fully functional Appliance has never been easier.

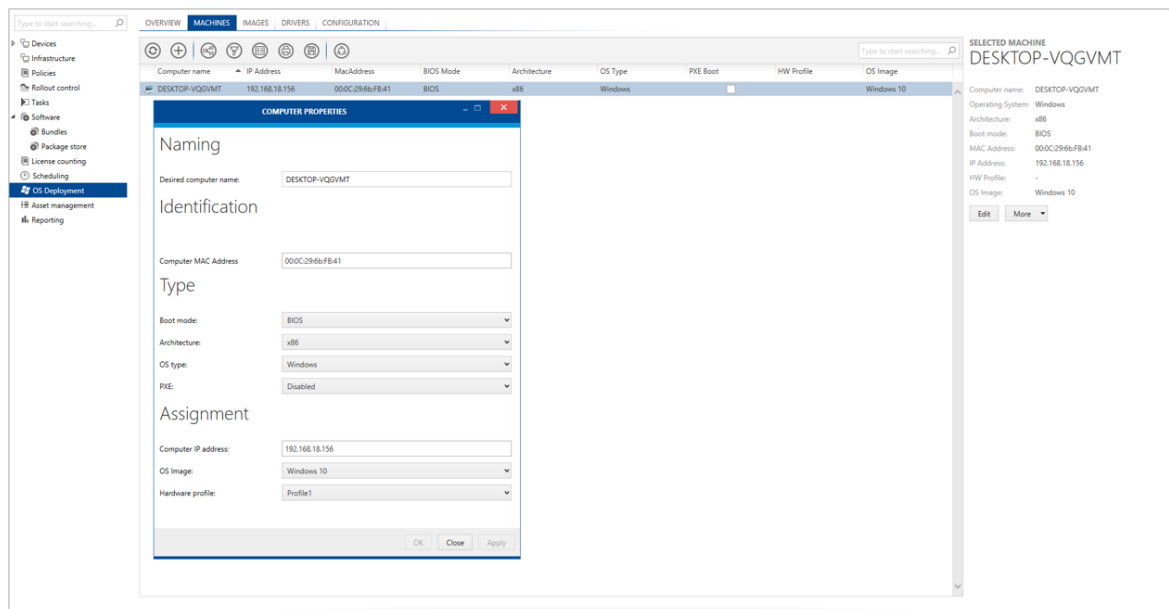


The Deployment Manager, Security Manager and OS Deployment have been updated to support software assignment to computers, patch automation and filtering in NON-AD scenarios. Therefore, an integration into the AD of the customer or the maintenance of a BlackBox-AD is no longer necessary.



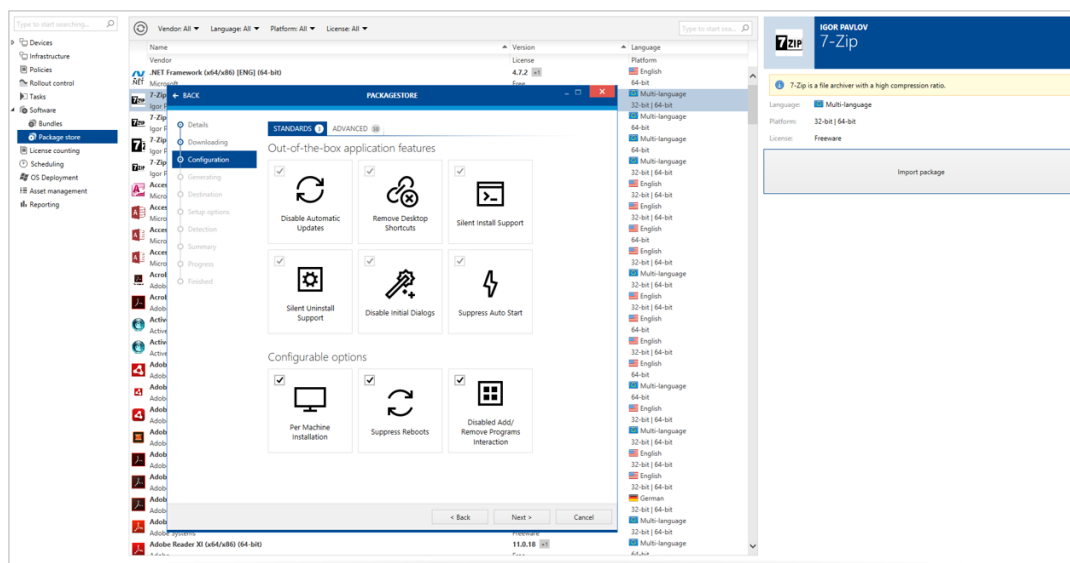
Redesign of the OS Deployment Module RMS-3836

To make the initial installation of the operating system faster and more efficient, the OS deployment component has been completely redesigned. The user interface, on the other hand, remains largely unchanged and ensures a smooth transition to the new version. In addition, the current OS versions are supported on the product side.



Package creation with new Package Store integration **RMS-4034**

With the new fully integrated Package Store snap-in, packages can now be created and customized from scratch. The new snap-in supports all Package Store functions, such as downloading sources and importing them into the RMSi software library.



Upgraded base Operating System and Software Component **RSA-116**

We upgraded the Appliance to run on newer Operating System, using newer version of bundled third-party software. Raynet products have been upgraded to the newest version available at the time of the release (see Product Matrix for exact version numbers).

Other features and improvements

Pre-installed Raynet software has been upgraded, and thanks to it your appliance version benefits from several new features, improvements and resolved issues, introduced separately in respective products.

For more information about the exact changes, take a look at each product guide and release notes. The following list of feature highlights is not comprehensive. It's only an small overview:

- New UI for common client windows (Reboot and Postpone) (RayManageSofti)
- Support for MSIX Packaging (RayPack)
- New UI of Workflow component (RayFlow)
- Screenshot editing and snapshot support in documentation editor (RayEval)

You can download the important documents for all products [here](#).

Other changes

- **RMS-146** We added support for a local floating license (user-based) server to the appliance. Required services are already pre-installed on your image.

System Requirements

The table below describes the supported operating systems and software pre-requisites of RaySuite Appliance at the time of release.

Component	Operating system	Pre-requisite software
Hyper-V Server	Windows Server 2016 Standard	Activated Hyper-V role

or

Component	Operating system	Pre-requisite software
VMware Workstation	10.0.4	-

or

Component	Operating system	Pre-requisite software
VMware ESXi	5.5	vCenter Server 5.5

Please note that Microsoft SQL Server Express allows 10 GB as maximum size of the database. This amount is roughly sufficient to hold inventory for up to 10.000 managed devices. Should the amount exceed 10.000 devices, higher edition of SQL Server such as Standard or Enterprise should be used. RaySuite Appliance database may be hosted on an existing SQL Server. RaySuite Appliance license does not include SQL Server.

Server sizing and scalability

The typical configuration satisfies the requirement to perform inventory of hardware and software for the given number of devices.

The performance of server and database disk space should be increased by 50% if inventory configuration would include file scan and usage monitoring.

Number of managed devices	Hardware	Software
1 - 4.000 devices	<ul style="list-style-type: none">• Dual Core CPU• 8 GB RAM• 500 GB disk space for storage	See Software Prerequisites above
4.001 - 10.000 devices	<ul style="list-style-type: none">• Dual Core CPU• 16 GB RAM• 1 TB disk space for storage	See Software Prerequisites above

For larger environments or with complex infrastructures including many remote locations and/or bandwidth limitations please contact a Raynet consultant to define and create a suitable server and network design.

RayManageSofti Server centric component can be split into application, database, reporting server. Additionally distribution servers can be installed to help collecting data in widely distributed environments.

Additional Requirements for Pre-Installed Software

There may be some additional software and/or hardware requirements for each component pre-installed on RaySuite Appliance. Refer to their respective User or Implementation Guides for more details about additional consideration.

Additional Information

Best practises

Best practises for (Re-)packaging with RaySuite Appliance

The Appliance is meant to run continuously, delivering stable functionality and high availability. To ensure that, use the following list of Best Practices considering packaging on a production machine

- Avoid using RayPack Studio directly on the Appliance machine. Core feature of RayPack Studio is the ability to snapshot and repackage running installations, which may leave your machine in a dirty state. For repackaging, use a dedicated VM environment, and start RayPack Studio binaries from an UNC share mounted to the Appliance machine. Repackaging and analysis of software on Appliance may be not quite accurate due to a number of frameworks and runtimes installed on the Appliance, which may not be present on devices you want to target with repackaged products.
- For tasks requiring no repackaging (for example opening MSI files or building MSI files with automation modules), RayPack Studio can be used on the Appliance.
- For best experience, you should start RayPack Studio products once on the Appliance and configure them for a global usage (for example setting up common resources and templates). When products are started from the shared location on an external VM, they will pick up the settings. Ideally, our common settings should define that packaging projects are saved in a global location on an Appliance or any other machine, immutable to snapshot management of the VM on which they are created.

Support

Information	Description
<u>Product Page</u>	Visit our product page for further information on RaySuite Appliance.
<u>Knowledge Base</u>	Take a look at the additional resources available at the Knowledge Base.
<u>Support Panel</u>	Please contact your Raynet service partner or use our Support panel to add your ideas or requirements to the RaySuite Appliance development roadmap.
<u>Download Page</u>	Simply download for further documentation.
<u>Newsletter Registration</u>	Our newsletter informs you about all important topics concerning our products and solutions as well as upcoming events and more.

Customization and Out-of-Support Notice

This Software supports extensive configuration, which may involve manual changing of configuration files, registry entries and other components. As an Appliance Owner, you are free to configure the product to match your business needs. However, bear in mind that some actions may hinder the troubleshooting and make the provided configuration fall out-of-support. These may include:

- Manual uninstallation, patching or upgrade of the provided Software
- Manual changing of Software settings (other than the settings provided by our dialogs and wizard or unless otherwise stated and allowed in the Product Documentation).
- Other custom changes which make the product work not as intended by Vendor

RaySuite Appliance is part of the RaySuite

More information online
www.raynet.de



Raynet GmbH

Technologiepark 20
33100 Paderborn, Germany
T +49 5251 54009-0
F +49 5251 54009-29
info@raynet.de

www.raynet.de