



TonerSaver™ 3

Product Overview

Developed by Spline Network Inc.
in conjunction with Software Imaging Ltd.

*This document was printed using a TonerSaver reduction of **25%**.*

THREE FEATURES

1. Save up to 50% of printer toner/ink costs:

Start saving toner and/or ink costs from the day you install TonerSaver.

Good for your balance sheet and good for the environment.

2. Easy operation:

Easy installation, easy management and easy operation with no impact on your existing printing system. Works with most printers.

Good for administrators and good for end users.

3. Print logs can be collected for analysis:

The status of the enterprise print services can be monitored and managed by collecting the print logs.

Good for printer management and good for security.

FEATURE 1 : SAVE UP TO 50% OF TONER/INK COSTS

**Toner/Ink Saving Rate
0%**



**Color and Monochrome
1234567890 1234567890**



**Toner/Ink Saving Rate
50%**



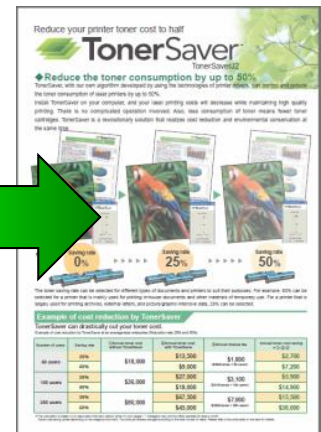
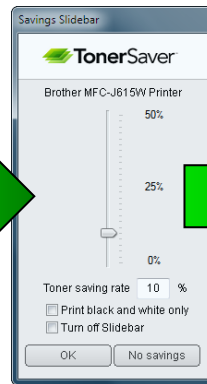
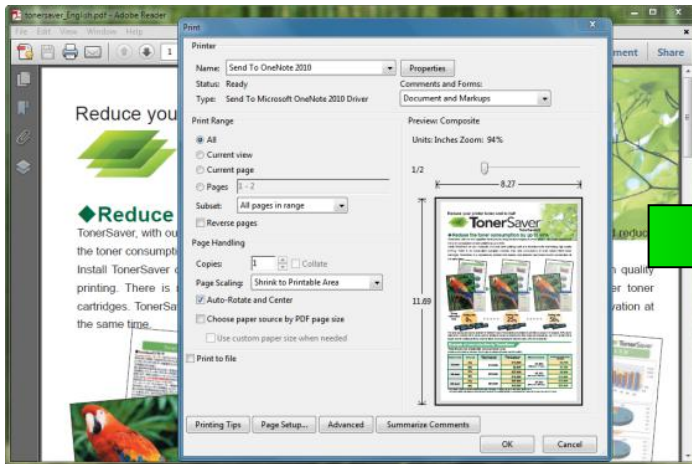
**Color and Monochrome
1234567890 1234567890**



FEATURE 2 : EASY OPERATION

The savings slide bar can be used to set the saving rate for each print but no special user operation is required.

- Saving rate can be set for each print.
- Saving rate can be set from 0% to 50% in steps of 1%.
- User saving rate can be enforced by disabling the slide bar.



FEATURE 3 : Print Logs Can Be Collected For Analysis

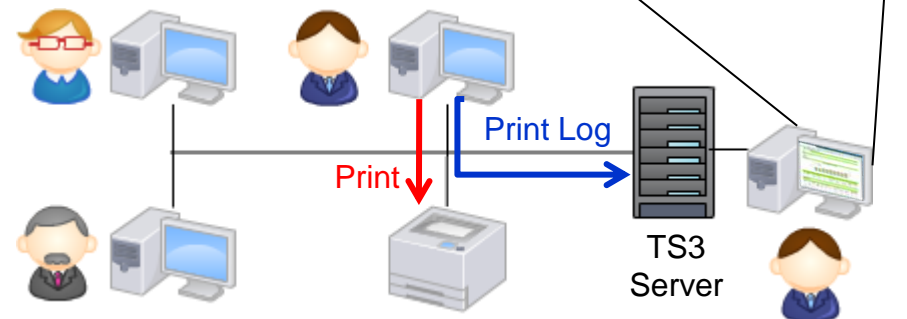
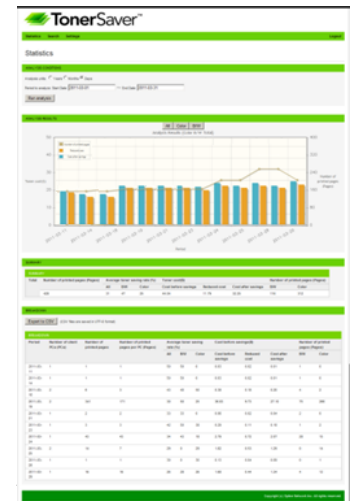
TonerSaver 3 can save a print log of every job.

The logs can be collected centrally for print management analysis.

TonerSaver 3 Server provides easy to use tools for searching and calculating company-wide printing statistics.

Items of print log collection	Example of print log display
Print date/time	2010-12-06 18:15:01
User name	Bob Smith
Printer name	Canon LBP5400 LIPS
Computer name	DELL-1
Number of print	1
Print file name	Summary of sales.xls
Print application name	C:\Program Files\Microsoft Office\Office12\excel.exe
Color/Monochrome	Color
Paper size	A4
Toner saving rete	25%

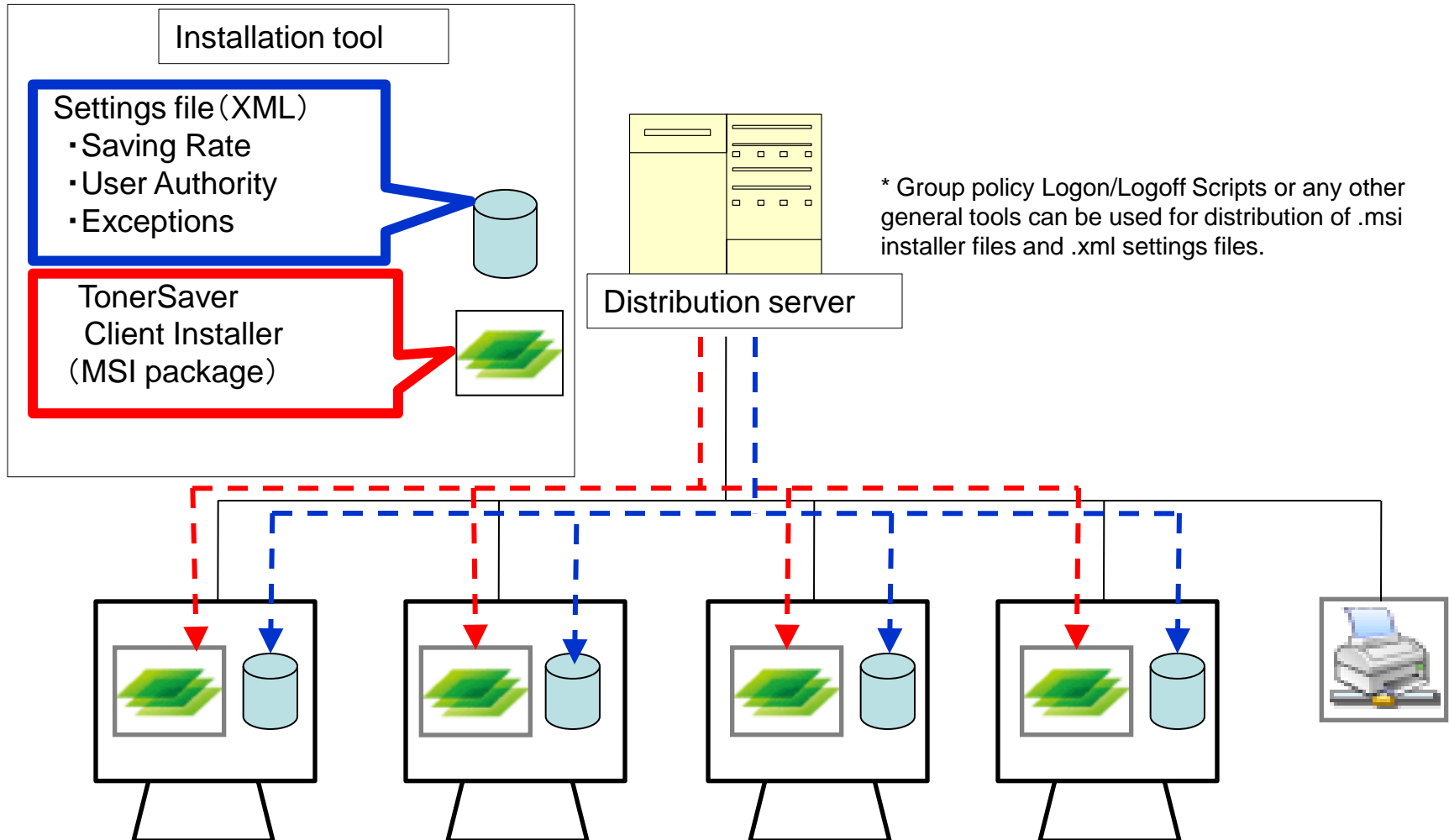
Browse logs and analyze print statistics in a WEB browser with TonerSaver 3 Server



Network installation

Silent Installation by MSI package is available

Administrators can change user settings by updating XML files



TRACK RECORD

630 enterprises with 230,000 licenses (as of 18th November 2010)

■ Companies who are using TonerSaver with 100 licenses or more

Category of industry	Number of companies	Example Companies
Bank	4	Major city banks : 2
Life insurance/ Non-life insurance	3	Sompo Japan Insurance Inc. Other Major life insurance companies : 2
System integrator	13	Otsuka Corporation Benic Solution Corporation
Manufacturing	11	Renesas Eastern Japan Semiconductor Inc.
Service business	8	Major human resource services company : 1
Retailing	9	Kanto Mazda Co., Ltd.
Government offices	4	Nishi-Tokyo city office, Fussa city office, Kogori city office
Pharmaceutical	3	
Transport/Telecom	2	Major carrier
Electrical supply	1	The Tokyo Electric Power Company, Inc.
Incorporated association	1	The General Insurance Association of Japan
Other	7	Credit service companies, Real-estate companies, Universities etc.

COST REDUCTION EFFECT

Category of industry	Number of employee	Toner cost	Achieved cost reduction
Major life insurance company	53,000	1,200M yen	300M yen
Major non-life insurance company	33,000	400M yen	100M yen
Otsuka Corporation	12,000	150M yen	40M yen
Major bank	11,000	150M yen	30M yen
Major human resource service company	5,000	80M yen	20M yen
Finance company	3,000	50M yen	20M yen
Food manufacturer	2,000	30M yen	9M yen
Car sales company	750	15M yen	4.5M yen
Drug chain	500	10M yen	2.5M yen
City office	300	5M yen	1.25M yen
Travel agency	120	2M yen	0.7M yen
Major supermarket	100	3M yen	0.9M yen

SYSTEM REQUIREMENTS 1

- **TonerSaver 3 Client:**
- **Operating Systems:**
 - Windows 7 (32bit/64bit), Windows Vista (32bit/64bit)
 - Windows XP SP 2 or later (32bit)
- **Processor:**
 - Windows XP:
 - - Pentium 550MHz or higher (800 MHz recommended)
 - Windows Vista and Windows 7:
 - - 800 MHz 32-bit or 64-bit processor or higher (1GHz recommended)
- **Memory:**
 - Windows 7: 1GB or more
 - Windows Vista: 512MB or more (1GB or more recommended)
 - Windows XP: 256MB or more (512MB or more recommended)
- **Free Hard Disk Space:** 32-bit OS 20MB or more, 64-bit OS 30MB or more

SYSTEM REQUIREMENTS 2

- **TonerSaver 3 Server:**

- **Operating Systems:**

- Windows Server 2008 (32bit/64bit)
- Windows Server 2003 (32bit/64bit)

* Also runs on Windows 7 (32bit/64bit), Windows Vista (32bit/64bit), Windows XP SP 2 (or later)

- **Processor:**

- 1.4GHz 32bit or 64bit processor (2GHz or higher recommended.)

- **Memory:** 512MB or more (2GB or more recommended.)

- **Free Hard Disk Space:** 400MB or more

* excluding space for storing optional logs.

AWARDS

▪ Sep. 2008: **”Jury's Special Award” at the Green IT Award**

Organizer : Green IT Promotion Council

Sponsor : Ministry of Economy, Trade and Industry



▪ Oct. 2009: **”Jury's Special Award” at the Green Purchase Award**

Organizer : Green Purchasing Network

Sponsor : Ministry of the Environment, Ministry of Economy,
Trade and Industry, WWF Japan, Nippon Keidanren,
Nikkan Kogyo Shimbun Ltd., The Mainichi Newspapers,
The Asahi Shimbun Company



▪ Dec. 2010: **”Special Award” at the Eco-Efficiency Award**

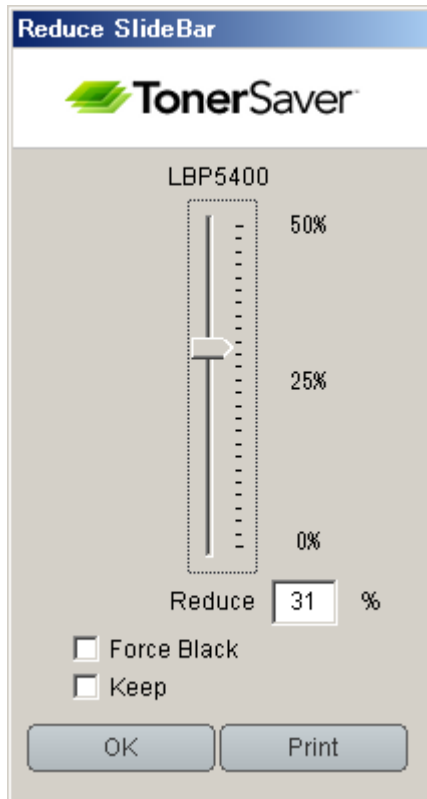
Organizer : Japan Environmental Management Association For Industry

Sponsor : Ministry of the Environment, Ministry of Economy,
Nikkan Kogyo Shimbun Ltd.



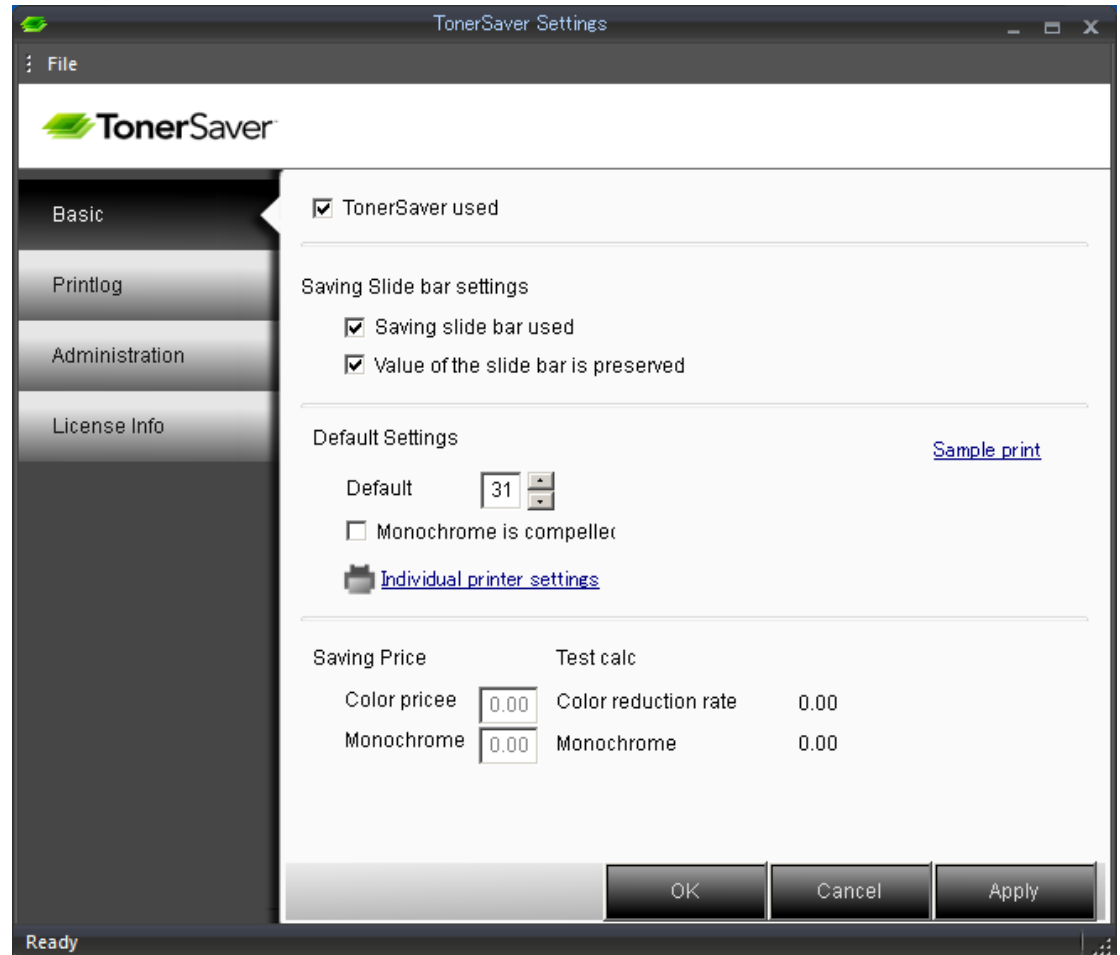
Screen Sample 1

Slide bar to adjust a saving rate



※Set a saving rate at the timing of print

TonerSaver setting



Screen Sample 2

Print log viewer on client version

Print Log Viewer

Home Style ?

OpenPrintlog Print

Export

SearchLog Bar

Mark NO Reduce

Analyze Tool

2010/12/10 - 2010/12/10

AverageSavingRate	PrintDate	UserName	PrinterName	SavingRate	PrintPages	ComputerN...	Docume
31.00	2010-12-10 14:40:...	Yamamura-...	LBP5400	31	1	YAMAMUR...	2010.12
PagePrintPages							
1.00							
TotalPages							
1							
-OfComputers							

FindBar

Document Name

Application Name

Printer Name

Server Side Log Analysis

TonerSaver™

Statistics Search Settings Logout

Search

SEARCH CONDITIONS

Date of print: Start date: 2011-01-01 End date: 2011-02-25
 Printer name: FX DocuPrint
 Application name:
 Print file name:
 Saving rate: % -- %
 Computer name:
 User name: Nigel
 Paper size:
 Color or B/W: Please select
 Number of logs per page: 20 Logs

Clear Run Search

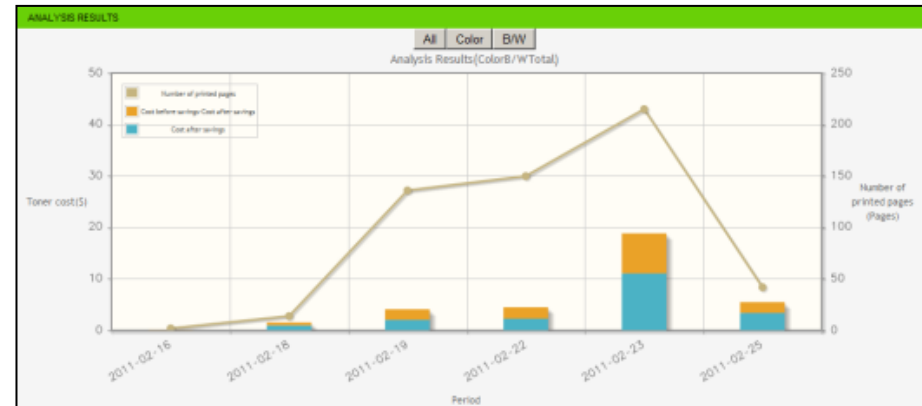
PRINT LOG SEARCH RESULTS

Export to CSV (CSV files are saved in UTF-8 format)

1 - 16

Date of print	Time	User name	Printer name	Computer name	Saving ra	Number o	Application name	Print file name
2011-02-18	17:27:32	TONERSAVER\Nigel	FX DocuPrint C2250	DESKTOP-XP	12	1	C:\Program Files\Adobe\Reader 10.0\Reader\AcroRd32.exe	The main difference between dig and traditional methods such as lithography.pdf
2011-02-18	17:27:18	TONERSAVER\Nigel	FX DocuPrint C2250	DESKTOP-XP	25	1	C:\Program Files\Adobe\Reader 10.0\Reader\AcroRd32.exe	The main difference between dig and traditional methods such as lithography.pdf
2011-02-18	17:28:58	TONERSAVER\Nigel	FX DocuPrint C2250	DESKTOP-XP	38	1	C:\Program Files\Adobe\Reader 10.0\Reader\AcroRd32.exe	The main difference between dig and traditional methods such as lithography.pdf
2011-02-18	17:28:43	TONERSAVER\Nigel	FX DocuPrint C2250	DESKTOP-XP	58	1	C:\Program Files\Adobe\Reader 10.0\Reader\AcroRd32.exe	The main difference between dig and traditional methods such as lithography.pdf

- ❖ Server Side HTML Log Viewer collects logs of all managed users.
- ❖ Logs can be analyzed, searched and exported to CSV file for further analysis.
- ❖ Accessed from anywhere via a web browser.



SUMMARY

Total	Number of printed pages (Pages)	Average toner saving rate (%)			Toner cost(\$)			Number of printed pages (Pages)	
		All	B/W	Color	Cost before savings	Reduced cost	Cost after savings	B/W	Color
559		45	50	32	32.07	12.45	19.62	406	153

BREAKDOWN

Export to CSV (CSV files are saved in UTF-8 format)

BREAKDOWN

Period	Number of client PCs (PCs)	Number of printed pages	Number of printed pages per PC (Pages)	Average toner saving rate (%)			Cost before savings(\$)			Number of printed pages (Pages)	
				All	B/W	Color	Cost before savings	Reduced cost	Cost after savings	B/W	Color
2011-02-16	1	2	2	30	30	0	0.06	0.02	0.04	2	0
2011-02-18	1	14	14	33	20	36	1.52	0.53	0.99	3	11
2011-02-19	1	136	136	50	50	0	4.08	2.04	2.04	136	0
2011-02-22	1	150	150	50	50	0	4.50	2.25	2.25	150	0
2011-02-23	1	215	215	40	50	28	16.45	5.37	11.08	115	100
2011-02-25	1	42	42	38	0	38	5.46	2.07	3.39	0	42