

PACKAGINGSUITE

RAYFLOW. RAYEVAL. RAYPACK. RAYQC

Enterprise Software
Packaging

•rayNET

Contents

Packaging Suite

- RayQC Advanced – Application Readiness
- RayEval – Software Evaluation
- RayPack – Software Packaging and Virtualization
- RayQC – Quality Assurance
- RayFlow – Workflow Management System

Package Store

A perfect combination

Floating License Server

Training

Edition Overview

PACKAGINGSUITE

RAYFLOW. RAYEVAL. RAYPACK. RAYQC.

www.raynet.de

PACKAGINGSUITE

RAYFLOW. RAYEVAL. RAYPACK. RAYQC.

Enterprise Software Packaging

Packaging Suite includes powerful software solutions with a large number of features that automate and accelerate holistic packaging projects.

Along with RayFlow, the Packaging Suite covers all the steps: From compatibility checks of your software applications to the evaluation to the packaging and the subsequent quality control as well as to the clearly structured workflow management.

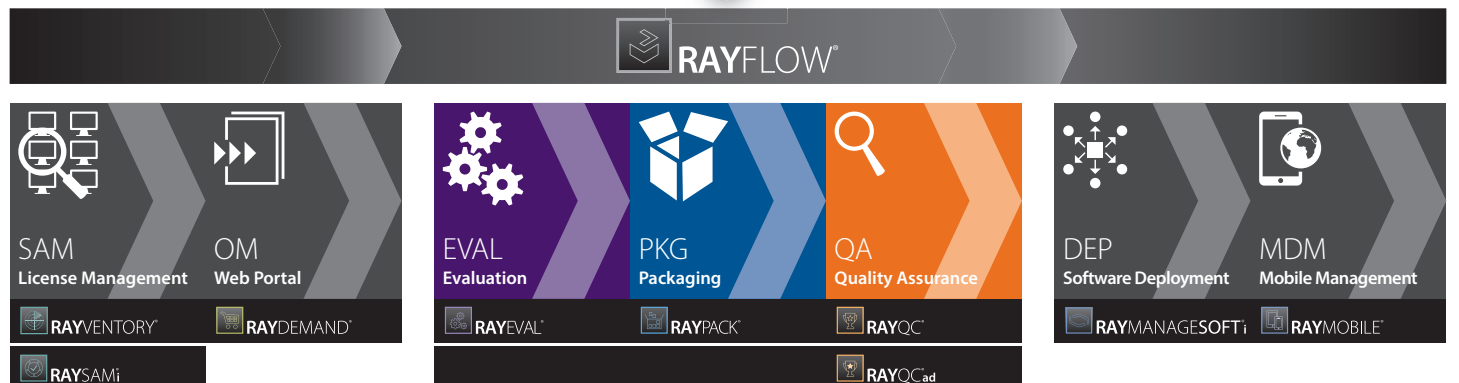
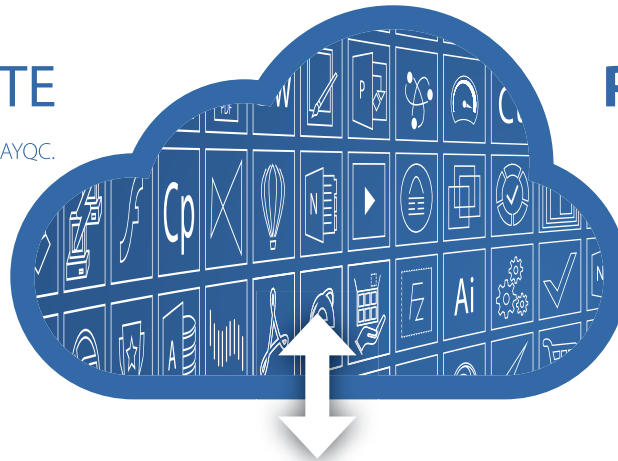
The perfectly matched software products allow to efficiently pass through the individual phases of a packaging process. At the same time, they enormously accelerate your workflow: The integration of all products into RayFlow enables an extremely comfortable exchange of data and information.

PACKAGINGSUITE

RAYFLOW. RAYEVAL. RAYPACK. RAYQC.

PACKAGE STORE

QUALITY. QUANTITY. FLEXIBILITY.



Enterprise Application Lifecycle Management



RAYQC[®]ad

Application Readiness

Check whether your application is ready for Windows 10!

RayQC Advanced provides the possibility to execute automatic collision and compatibility tests. These tests allow to determine whether a software package is fit for usage within a specific environment, along with other applications or in virtualized operation modes.



Requirements

When it comes to migration to Windows 10, companies are faced with the uncertainty whether their applications are compatible with the new target platform. They usually have difficulties to foresee potential disturbing factors. This does not only lead to unexpected delays, but costs a lot of precious time and money as well.

Core Tasks

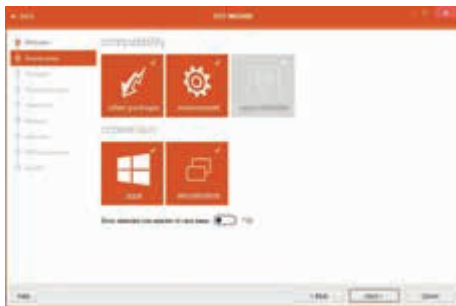
With RayQC Advanced Raynet offers a solution to test the readiness of applications with respect to various target environments, e.g. OS systems or system snapshots (Golden Image). Testing software with regards to its general suitability for virtualization, combination and/or compatibility is also supported. For this purpose, RayQC Advanced provides standardized testing methods for reliable results according to best practice.

Rule-Based Testing Procedures at a Glance

1. OS & Environment Compatibility:
Is it safe to deploy a software application to a target system? A broad range of operating systems is supported: Windows 7, 8, 8.1, 10, Server 2008 R2, 2012, 2012 R2. Beyond these static operating systems it is also possible to test for suitability in the context of a system snapshot defined environments.
2. Collision tests of different software products against each other:
Is it possible to run software applications parallel on a single device? Next to software applications and packages also merge modules, legacy setups, and OS snapshots can be tested for compatibility
3. Virtualization:
Are there general issues that prevent virtual operation modes for software packages? RayQC Advanced does not analyze with regard to a specific target format (such as App-V, ThinApp, etc.), but investigates universal criteria of virtualized usage.
4. Web Application Browser Compatibility
Is a web application compatible with Internet Explorer 9, 10, and 11? The built-in crawler engine enables users to download a local website copy and analyze its content for typical issues in combination with Microsoft Internet Explorer 9, 10, and 11.

Application Target

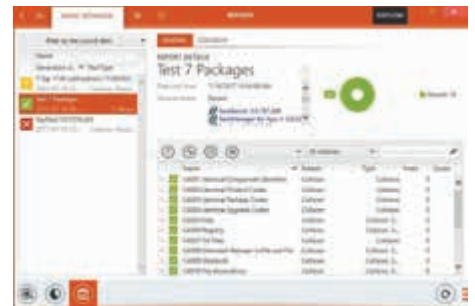
The intention of RayQC Advanced is to identify potential confounders right at the beginning of the software packaging and deployment process, and to guarantee the result quality of OS migration or software virtualization projects. RayQC Advanced considers software applications involving specifications of individual IT environments.



Rule-based testing procedures



New rule-sets



Comprehensive reports

Reports

The test results are communicated by means of comprehensive reports, which are broken down not only by test procedure/s, but also provide detailed information per test point. The reports can be exported into various file formats, such as PDF, DOC(X) HTML and XPS.

- Advanced and interactive presentation of results is provided as well as options for filtering, re-testing etc.
- A full history of all test results is available and can also be seen retrospectively, whilst the latest result per package is directly visible.
- During testing, it is possible to determine whether the results should be logged to the catalogue, which allows to perform quick tests without affecting the actual library database.

Automated remediation

In case that incompatibilities are found, RayQC Advanced offers automated remediation for a number of compatibility issues.

Full Integration into RaySuite

With the full RaySuite integration, users have the possibility to start tests directly from within RayPack. The results of the quality tests are directly shown within the RayPack validation results, allowing to fix issues before the package is actually tested thoroughly in later quality assurance phases of the overall packaging process. With the help of RayPack, non-MSI based packages ("legacy setups") can be converted and imported into the library.

With RayFlow users will always be able to see the entire process and to check the current position of a package order – RayFlow will carry the relevant data from phase to phase within the process, which also includes data exchange with tools such as RayQC Advanced. Reports from RayQC Advanced can be exported directly into the workflow tool RayFlow. As with any other product included in RaySuite, Raynet puts massive emphasis on providing a simple and user-friendly interface for RayQC Advanced, which facilitates work tremendously.

Benefits

- Next to software applications and packages also merge modules, legacy setups, and OS snapshot can be tested for compatibility
- Vier regelbasierte Testverfahren
 - OS and environment compatibility
 - Software harmonization
 - Virtualization
 - Web application browser compatibility
- Test results are communicated by means of comprehensive reports



RAYEVAL®

Software Evaluation



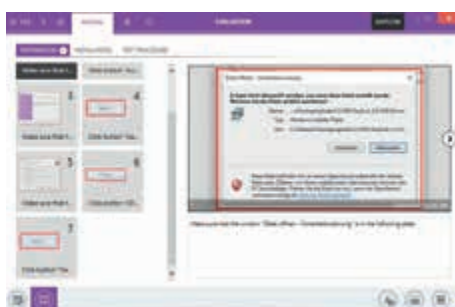
Create professional packaging manuals

RayEval allows you to document your work. It is a professional tool for any documentation tasks that require the collection of screenshots and step-wise procedures, such as the setup and configuration of an application for a packaging project.

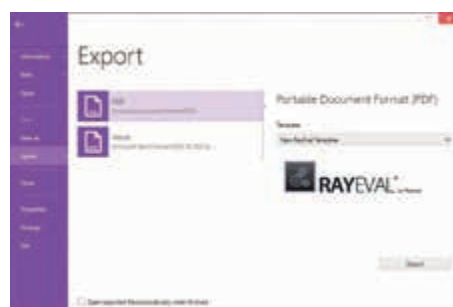
A precise and orderly documentation is a pre-requisite to avoid unnecessary costs. Typically all evaluation documentation is done manually. Screenshots of every single installation step or configuration choice will be taken and assorted with a suitable description, in order to give the software packagers an overview of the installation and a clear understanding of the packaging work to be done.

This is often a very time-intensive task, which can quickly become unclear and therefore lead to errors. With RayEval, these tasks are managed via an intelligent automation tool, which speeds up the entire packaging process and ensures a professional documentation of all the necessary steps.

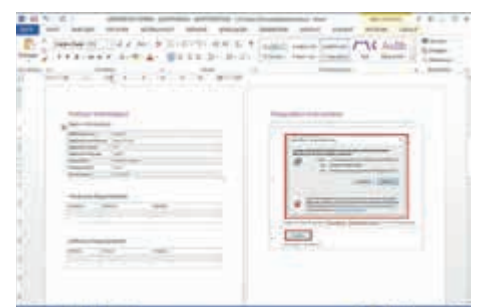
Screenshots are taken with a simple mouse click, inserted in the documentation automatically, and then you are then immediately prompted to insert the correct description/comments. Following this step, you can then freely change the order of appearance of the screenshots or insert comments afterwards. Edit your document until it is perfect, without having to start again from scratch. Your evaluation documentation will increase in clarity and consistency over time, therefore, also reducing your packagers' time and effort to understand all necessary tasks. Lower rejects rates will also result, leading to an overall more efficient and cost-effective process. With RayEval you can create and document test cases of a software jointly with the Application Owner in parallel.



Automatic capture of the installation routine



Easy export to PDF or Word format



Professional evaluation documentation

TestRail Integration

The creation of test descriptions in TestRail is complex and time-consuming in the traditional way. The enhancement of RayEval makes it now possible to create descriptions of test cases directly in RayEval and then integrate those in the TestRail environment. You can display single test steps and simultaneously define the expected result with the TestRail enhancement..

In addition to significant time saving, the extension makes it possible to create test descriptions offline and then later integrate those in the TestRail environment. Thus, tests can be organized, managed and tracked more efficiently.

Upcoming Features

Automatic Properties

RayEval will automatically transfer existing properties and transmit their respective values into a new document.

Screenshot Editor

The user will be able to edit a captured screen shot by marking or highlighting a relevant element, add text or graphics, etc.

Text Editor and Spell Checking

RayEval will allow text format editing (color, size, etc.) and include spell and grammar check.

Script Creation

RayEval will automatically create a script during the installation and configuration of the package and will record all steps which have been made during this process. This way the process can be automated for future installations.

Snapshot Engine

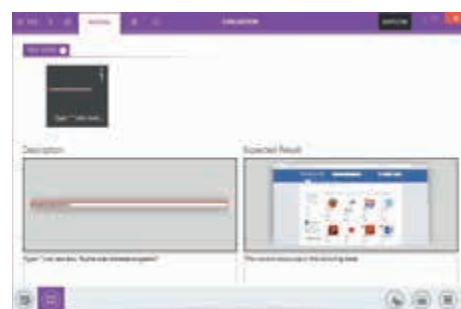
The user will be able to create a snapshot of the operating system before the evaluation process and afterwards to capture changes made during installation and configuration of the package. The result will be delivered in RayPack format or in MSI.

Benefits

- Quick and easy executions of professional evaluation documentation
- Automatic capture of the installation routine
- Take screen shots simply with a click of the mouse during the installation
- Easily export the evaluation project in your favorite format (Microsoft Word, PDF, etc.)
- Professional and consistent documents over time
- Highly customizable (plug-in-based customer templates, customer-driven project ownerships, etc.)
- Package and packaging parameters can also be imported in the document
- Once completed, it can be re-used many times
- Data can be transferred into RayPack or RayFlow
- Integration with TestRail



Integration with TestRail



Creation of test descriptions for TestRail



RAYPACK®

Software Packaging and Virtualization



Create reliable packages
for software delivery

An enterprise IT department has to face many changes nowadays: migration to Windows 10, virtualization, cloud computing, bring-your-own-device and a lot more.

IT managers are asked not only to define strategies for these new subject matters, but also to cut costs and improve the efficiency in all areas of their work, whilst delivering better service to their end-users.

With this growing complexity in mind, ad hoc testing, converting, and packaging applications is no longer a viable method. IT departments need to control and streamline tasks by a unified Application Lifecycle Management system, which encompasses the whole application lifecycle. A critical part of this lifecycle is the packaging or re-packaging of software applications to convert them to the required format for automated deployment to managed devices. This is exactly where RayPack as a framework for the creation and management of software packages kicks in: it supports a broad variety of package formats, operating systems, and deployment systems. The RayPack components allow enterprises to implement well-structured processes for controlling and executing EALM tasks.

In order to manage these processes, RayPack utilizes integrated framework components along with external connectors, which enable interoperability with market-leading workflow, software deployment and data storage systems. Despite its stand-alone usability, Packaging Suite is fully integrated within RaySuite, Raynet's suite of Enterprise Application Lifecycle Management products. RaySuite delivers all the required lifecycle tools embedded into the central workflow management system RayFlow. RayFlow encompasses highly specialized applications for the successful completion of inventory, evaluation, packaging, compatibility assessment, quality assurance, and the final deployment of software packages.

Benefits

Economical Advantage Guaranteed

- Fair pricing policy with irresistible offers
- Substantially accelerated migration projects reduce costs
- Know-how conservation & transfer in single-source project files

Packaging as easy as 1-2-3

- Repackaging with the fastest capture-engine on the market
- Full-service editor for MSI-based packages
- Generation of classic (e.g. MSI, MST, MSP) and virtual package formats (e. g. App-V, ThinApp, SWV)
- Support for Universal and Modern Applications (AppX wrapping)
- Intelligent modification markup enhance the packaging experience

Minimal Setup Time

- Maximal scalability of packaging infrastructure
- Intuitive usability provided by our highly modern user interface
- Profile-based settings for task-specific standards

End-to-end Application Lifecycle Management

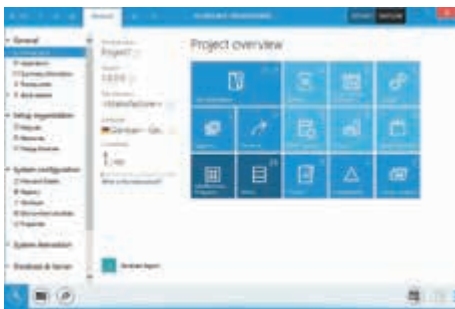
- Fully integrated within the Unified Data Concept (UDC) of RaySuite
- Sustainable productivity in durable IT landscapes
- Comfortable interconnections to typical third-party solutions for inventory, asset analysis and software deployment

Components

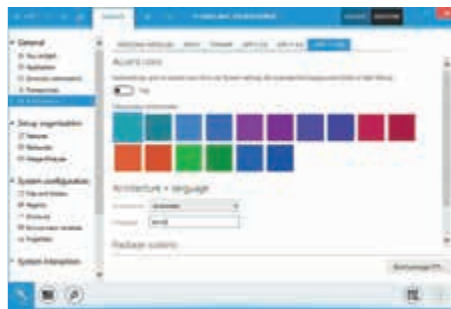
When Windows Installer procedures reach their limitations, RayPack is ready to raise the bar. Intuitive wizards guide the user through classical packaging tasks – beginning with repackaging, then moving on to the generation of Windows Installer Transform files, and finally coping with the realization of complex packaging requirements. Our framework simultaneously provides novice support with the help of visual interface elements and wizards, and the means to master advanced levels of packaging.



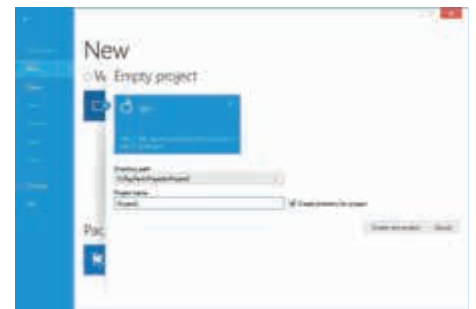
Software Packaging and Virtualization



PackDesigner project overview



Conversion and repackaging to Windows 10 APPX/UWP format



Create support for macOS packaging

PackRecorder

With PackRecorder, users run the market's fastest capture engine for system snapshots. It recognizes added, manipulated and removed objects of various types. Providing reusable system snapshots is the technical cornerstone for the execution of sophisticated methods of packaging related analysis. Our editor allows the adjustment of exclusion rules directly from the capture result. Besides being a nice convenience, it is also one of the uncoun- ted features which ensure that PackRecorder initiates repackaging processes of the highest quality. Beneficial results include minimal validation measures, minimal target system interference and noticeably faster delivery times overall.

PackDesigner

With PackDesigner, users create, edit, and validate packages for systems with x86 and x64 architectures. It is not just another tool for editing package resources. It is the editor experienced packagers have always wished for. Beneath the polished finish of simplified, wizard-based procedures (e. g. for permission control, run-time operations, database interaction, and IIS population), the intelligent PackDesigner engine guarantees quality and

security. PackDesigner does not only provide everything required to prepare silent software installation routines, but offers an elaborate set of setup design features as well. Vendors and developers who need to prepare the professional publication of their software products, are highly welcomed to be a part of the Packaging Suite community.

PackTailor

With PackTailor, users extract installer adjustments by applying the easiest of methods: The simple walkth- rough of the installation's user interface sequence, which is already contained in the MSI resources. As soon as the results of user interaction have been traced, analyzed, and – where required – manually fine-tuned with the PackTailor Wizard, RayPack generates a transform file that is ready for deployment. Preparing a setup that runs in the background without requiring user interaction (silent installation) has now become a matter of just a few mouse clicks – like MSI branding and localization.



PackBench

PackBench provides packaging oriented task organization. It is a component extension to the RayPack packaging framework. PackBench is designed to provide a lightweight application for the management of standardized packaging routines within a packaging factory. Whilst superior workflow management tools, such as RayFlow, help to plan and streamline more global and phase oriented processes to enable seamless department and company interoperability, PackBench is designed to fulfil specific needs of packaging engineers and their typical everyday business. It enables the utilization of any RaySuite or 3rd party application as functional tool for professional application packaging, allowing packagers to integrate all the well-proven helpers for swift and high quality job performance.

The PackBench environment is composed of a central database server and several clients, providing the user interface for the management and execution of packaging related tasks. A typical packaging environment extends these components with shared locations for resource storage, and a collection of (usually virtual) devices for repackaging, testing, and the like.

Integration Package Store

The integration of the Package Store in the Packaging Suite occurs via the packaging tool RayPack. This tool can be used to further adjust software needed to maintain typical IT environments. RayPack provides direct access to the available packages in the Package Store.

The modifications available are usually sufficient to attain the desired installation target via deployment systems. If required, additional Packaging Suite modules referred to as PackDesigner and PackRecorder are available. With minimal effort, these tools enable advanced adjustments which cannot be realized without deeper insight and/or modification of the original resources.



RAYQC®

Quality Assurance

Ensure the quality of your software packages!

The quality control of a product does not only start after its production, but accompanies all phases of the product lifecycle management.



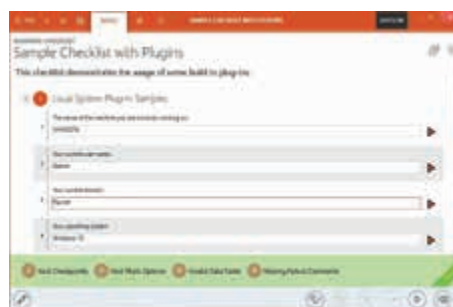
Quality control is an underlying factor during the entire lifecycle of the product, from the planning phase through its actual production and implementation, all the way until its end-of-life. This is highly relevant when it comes to Enterprise Application Lifecycle Management. Errors or conflicts in software applications and their packages can have serious consequences on the receiving clients, as they often lead to the failure of business-critical applications and thereby create high costs as well as long term damage to the reputation of IT departments and enterprises.

Intelligent test rules and quality control processes that ensure a high level of automation in repetitive tasks are needed to avoid these issues and provide a constantly high level of quality.

Standardization, automation, and flexibility are fundamental steps to ensure flawless functionality and error-free applications. After years of experience and numerous successful IT projects, we have perfected the art of software packaging quality control with the product RayQC.



Easy creation and management of checklists



Execute test criteria



Export of the test results in PDF

RayQC is a rule-based tool used to create and execute test criteria in one or more checklists.

It offers various modules to check the quality of applications and software packages throughout the Application Lifecycle Management process. It also allows you to integrate your own test criteria. The execution of the various test phases is typically done via a combination of manual (i.e. are there available and sufficient licenses for the application?) and automated tasks (i.e. are the MSI properties set in accordance to the packaging guidelines?).

In addition to the 'easy to use' Checklist Viewer, it is the rule-based interpretation of the test results which brings the quality assurance offered by RayQC to an entirely different level. For instance, by using the predefined interpretation rules in RayQC, there is the option that the overall quality control phase will not fail, even though one or more test criteria are set to 'not achieved'. All the control steps are also summarized in a final quality report which is then handed over to the next packaging process phase.

Therefore, RayQC meets the requirements for a software packaging quality control tool. With RayQC, you will immediately see a reduction in errors, and in the long-term, secure the quality of business processes, which in turn will drastically alleviate the excess burden put on IT and Helpdesk alike.

Standardization

- Create and manage user-defined report profiles
- Maximum security against manipulation of your checklists via certificates
- With the new resource management, checklists are stored together with all necessary documents and graphics in one single file
- External Plug-ins can now be implemented using PowerShell and allow full access to all system resources and information
- Easy creation of XML-based checklists with the Checklist Editor
- Create your own test criteria for each individual quality control phase in the software packaging lifecycle
- Define how to proceed with each test result. Does a "failed" test lead to a rejected package or does the tester simply need to document the reason for failure to move onto the next test phase?
- Documentation and export of the test results in the Quality Report
- Export of the test results (in DOCX, HTML, and PDF)

Automation

- Automate part of the test routines (runbook) through the integration of your own or Raynet's developed automated test scripts
- Start tests directly from RayFlow and integrate the overall process management with RayFlow
- The option of uploading the quality reports into RayFlow

Benefits

Reduce IT and Helpdesk Costs

- RayQC increases the quality of your software deployments through multi-level and standardized test plans by relieving the manual testing tasks of your workforce

Improve End-User Experience and Productivity

- New editor to easily create and edit checklists for a high level of automation
- Drag & drop of checklist elements
- Tips which are given during the editing greatly simplify the creation of checklists
- With the new resource management, checklists are stored together with all necessary documents and graphics in one single file
- Create and manage user-defined report profiles

Best Practices meet Customization

- Our Best Practices Templates deliver a solid basis, which can be easily and quickly amended to suit your company-specific requirements
- Our open plug-in interface allows the integration of our existing scripts in checklists

PACKAGE STORE

QUALITY. QUANTITY. FLEXIBILITY.

Software Packages Online



Immediately available software packages: analyzed, quality-assured and deployable.

Package Store offers preconfigured software packages at a fixed price. All configuration options, which are provided for the software by the manufacturer, can easily be adapted using the included RayPackage configurator – even without profound packaging experience.

www.packagestore.com

In addition, the software is tested for industry standards defined by Raynet according to best practice:

- Silent Install Support
- Silent Uninstall Support
- Disable Automatic Updates
- Remove Desktop Shortcuts
- Disabled ARP Interaction
- Per Machine Installation
- Disable Splash Screen
- Suppress Auto Start
- Suppress Reboots

Benefits

- All software packages available worldwide - analyzed and quality-assured
- Top 100+ software products based on download numbers
- Release Management: automatic information about updates
- Many additional data about the software, e.g. Specification of license type, software description, architecture, and many more
- Planning security through immediate availability or within 10 days after ordering
- In perfect combination with the packaging Suite



RayPackage configurator



Configuration options



Detailed package documentation

The software packages can be obtained from the Package Store www.packagestore.com.

All options that are configurable with RayPackage are listed there. The deployable software package is generated based on the selected configurations with the push of a button. For each generated software package a complete documentation in which the chosen settings are captured is automatically created. MSI software is provided as MST files and the files for legacy packages are provided as wrappers/script.

In addition, the Package Store includes all relevant information about a package, such as the manufacturer, product description, licensing, function, dependencies, OS compatibility, prerequisites, download link of the original sources and many more.

We offer a large package selection that includes almost every software title, including the 100+ most frequently used software applications in enterprises. If the package you are looking for is not available, you can easily request it with a form.



Package Store and Packaging Suite: Bringing together what belongs together

With the combination of the Package Store and the Packaging Suite, you will now cover all scenarios of software packaging. The result is not only more efficient and cost-effective, but also easier than ever. The Package Store delivers Windows 10 tested, pre-configured and/or customized packages in any available format, and for any deployment solution.



RAYFLOW®

Workflow Management



Best Practice Workflow for Application Lifecycle Management

RayFlow is a workflow management solution that collects and provides required information via tasks and phases, tailored to project needs of any complexity level. It operates as joining link between teams and their tools. RayFlow controls and observes the workflow for the overall Application Lifecycle: From license management to deployment, from application owners up to project managers and external stakeholders.

This workflow management solution provides a simple yet flexible administration and operation of projects – for one or more clients at a time. Essential information, such as the current task status, SLAs, categories, etc., is clearly structured and easily accessible within each phase. The invented global search additionally improves the direct lookup of specific tasks.

Configuration – Maximal Flexibility

RayFlow is deliberately designed for maximal flexibility in order to be able to grow beyond the origins of packaging factory process management and to adapt behavior and control structures to the needs of any business process. The real stunt is not the provision of flexibility itself, but rather embedding it into a user interface that convinces operators and administrators likewise and allows them to interact intuitively.

A workflow management tool does not only have to provide a decent interface for the actual task execution within the flow, but at the same time requires an elaborated administrative environment. In this regard, RayFlow incorporates a web interface that is divided into three primary areas of activity: Management, Administration, Configuration.

Depending on the individual field of operation and responsibility, users have privileges to create new user profiles, generate reports, and to create and configure new projects – regarding SLA conditions, settings of the project specific user interface, and the actual phase flow.

Due to the ability to manage users and their access rights, data visibility, and notifications across project boundaries, RayFlow is a tool that adjusts effortlessly to the requirements of any given case.

Tracking – High Level Transparency

By using the tracking feature, users are able to keep an overview of the current status of project tasks and to assess the status of one specific task as well. Taking over a task or assigning it to another user is a one-click activity – assuming that the user profile is equipped with the required privileges for the latter feature.

With RayFlow, customers obtain a very high level of transparency, which allows for an exact and comprehensive tracking of each and every task. This feature does not only support easy coping with everyday workload within a project, but at the same time provides the level of overview managers need to ensure a successful project progress.



Tracking - High level transparency



Package deployment integration



Deployment wizard for RMSi & SCCM

Notifications – Stay up to date

Staying up to date has never been this easy and convenient. It is a matter of a few clicks to create notifications for single users or user groups. Intelligent filters are the base for the definition of conditional statements that control which user will be informed about what event. This might be a change to the status of a task within a specific phase, modifications on data fields, or any other event that has been defined within a project workflow. Emails sent as notifications are drawn on templates, which vary based upon the triggering event. Templates are easily adjustable directly from within the RayFlow user interface for a project with the built-in HTML Editor. Applying your corporate design on notification templates is achievable with minimal effort.

Intuitive Handling

RayFlow does not require day-long admissions, endless documentation or expert knowledge. The initial training will usually take not much longer than an hour and will already enable all employees to use RayFlow productively. A fast implementation into the everyday corporate life and a high user acceptance is assured.

Integration and Standardization

Implementing state-of-the-art and standard conform communication concepts, RayFlow is restrictive where required, and flexible where functional benefits are achievable without any risk.

RayFlow operates modularly

In fact, there is an inevitable trigger for the intensive contact with a vast variety of tools and system environments: the conceptual keynote that RayFlow is the controlling backbone of business processes. A workflow management system does not only have to communicate and interact with a heterogeneous environment, but has to master this in a way that emphasizes on aspects such as security and stability. Even though the tools of the RaySuite product family are optimized to work best in conjunction with each other, the RayFlow data service fully covers 3rd party tool integration as well.

Best Practice Approach

RayFlow makes it easy for you to implement the latest best practice approaches. With role-based access, implementation according to ITIL, comprehensive reporting capabilities, audit, and configurable process phases, which all allow simple and reliable SLA management, Ray Flow's functionalities and handling are simply unique.

RayFlow is more than a mere interface between applications, as it is a platform for teamwork and cooperation at the very same time.

Benefits

Faster Software Rollout

- Speeds up packaging processes by implementing customer-defined phases
- Better quality leading to lower reject rates and quicker project completion

Improves Quality

- Support of best practice processes such as ITIL
- Implementation of quality monitoring gateways
- Higher achievement rates in SLA management

Reduces Costs

- Reliable software deployment
- Minimization of software mistakes
- Reduction of helpdesk efforts

Enables Compliance

- Powerful tracking system for SLA management
- Audit trail is secured via role-based access
- Reliable reporting and status updates

Organization

- Automatization of packaging processes and associated Application Lifecycle processes
- Connects teams worldwide; from packaging engineer to management

Reporting

- Individual reports
- Standard reports
- Dashboard functionality

Floating License Server

Manage your software licenses effectively

With the Floating License Server, we offer a concurrent user license model, which enables simultaneous access to your licenses. The licenses are not machine-bound and can therefore be installed on any number of machines.

Each authorized user chooses from the pool of existing licenses, which is managed by the server. If the pool consists of 10 licenses, 10 users have the possibility to use the software application simultaneously. An additional user who wants to log in simply waits until one of the licenses is released.



RAYACADEMY[®]

Trainings

Raynet is the service provider with the most certified trainers and packagers worldwide.

The experience gained over the past decades from hundreds of successful projects, trainings, and packaging factory implementations is all molded into Packaging Suite.

Therefore, the main mission of Packaging Suite is to support professional packagers in operating their packaging projects successfully and efficiently.

On our website you will find an overview of the planned trainings.

PACKAGINGSUITE

RAYFLOW. RAYEVAL. RAYPACK. RAYQC.

Edition Overview



VIRTUALIZATION



PACKAGE STORE

QUALITY. QUANTITY. FLEXIBILITY.

Standard Edition

Professional Edition

Enterprise Edition

Complete Edition

	Standard Edition	Professional Edition	Enterprise Edition	Complete Edition
RAYEVAL	✓	✓	✓	✓
RAYPACK	✓	✓	✓	✓
RAYQC	—	✓	✓	✓
RAYQC ad	—	—	—	✓
PACKMANAGER for App-V	As Stand-alone	Available	Included	Included
VIRTUALIZATION	Not available	Available	Included	Included
PACKBENCH	As Stand-alone	Available	Included	Included
PACKAGE STORE	Available	Available	Available	Available

Possible Add-Ons*

* Additional Add-Ons are not available for Service Provider



Raynet GmbH

Technologiepark 20
33100 Paderborn, Germany
T +49 5251 54009-0
F +49 5251 54009-29
info@raynet.de

www.raynet.de

About Raynet

Raynet GmbH is a leading and innovative service and solution provider in information technology and specialized in the architecture, implementation and operation of all tasks within "Application Lifecycle Management". Raynet's Headquarters is in Germany and presently has additional locations throughout Germany, the USA, Poland, UK and the Netherlands.

Since almost 20 years, Raynet has supported hundreds of customers and partners with its products and solutions for enterprise application management projects worldwide. These include license management, software packaging, software deployment, migrations, client engineering and much more. Additionally, Raynet maintains and cultivates strong partnerships with leading companies in Application Lifecycle Management.

Raynet products and solutions are unique in design and functionality. Their development is highly driven by our customers and partners who play a big role in the development of our products and are a key reason why our products are always cutting edge. Whether you want to introduce a new deployment tool or to start a SAM project, whether you want to plan a packaging factory or do a migration – Raynet is the choice for best-of-breed-practices in services, products, and solutions for Application Lifecycle Management.

Next Steps

For more information, please visit our website: www.raynet.de or contact our sales team on +49 5251 54009-0 or sales@raynet.de