

Press Release

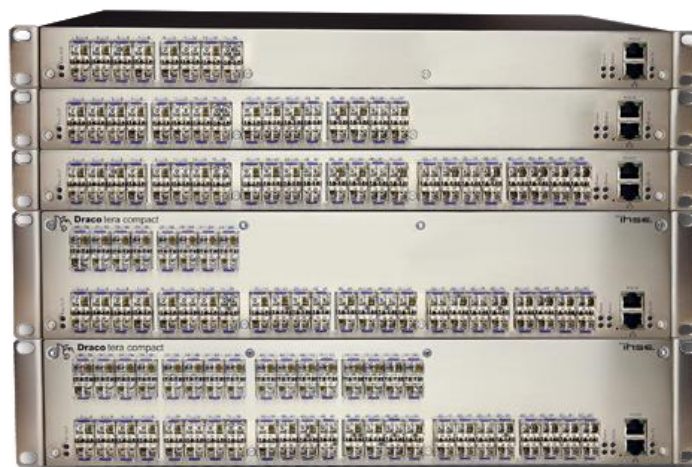
ISE2015 stand 10-R120

IHSE GmbH
Maybachstrasse 11
88094 Oberteuringen
Germany

phone +49 7546 9248-0
fax +49 7546 9248-48
email info@ihse.de
web www.ihse.com

IHSE launches 3G matrix switches in compact design

Oberteuringen, January 29, 2015 – IHSE today announces the release of new high speed models in the Draco tera compact KVM matrix switch series. The expanded bandwidth enables real-time switching of vast amounts of data including 4K video at optimum image quality.



3G compact switches in different sizes

IHSE is a world-leading manufacturer of advanced Keyboard Video Mouse (KVM) products for the switching and extension of computer signals. Matrix switches enable switching between various computers and remote consoles comprising keyboard, pointing devices, monitor and other peripheral devices.

IHSE's recently-released 4K extenders have shown the way ahead. This technology has now been applied to the **Draco tera compact** series KVM switches. New high speed versions are available in all existing sizes (8, 16, 32, 48, 64 and 80 ports) and can meet the highest performance demands. The higher 3G bandwidth enables enormous transfer speeds, allowing seamless switching and real-time distribution of high resolution signals.

Data transmission via fiber optic cable allows transfer distances of up to 10 kilometers on either side of the matrix, which is ideal for interconnection between buildings. Computers can quickly be accessed from any position.

The full range of IHSE KVM products, including the Draco tera compact switches' new 3G versions, will be available for demonstration at **ISE** in Amsterdam, February 10 - 12, 2015. Booth **10-R120**.

About IHSE

IHSE is a leading developer and manufacturer of advanced Keyboard, Video, Mouse (KVM) devices with 30 years of experience. KVM technology enables the remote switching, bidirectional extension and conversion of primary computer signals including DVI, HDMI, 4K DisplayPort, digital audio and USB. IHSE develops and manufactures an extensive range of KVM switches and extenders with visually lossless signal transmission from headquarters near Lake Constance, Germany.

IHSE products have been certified for outstanding manufacturing quality, operability, resilience and high transfer speeds. Many renowned companies and institutions across vertical sectors including Broadcast, Post Production, Control Rooms, Banking, Industrial, Healthcare, Maritime, Education, Venues, Air Traffic Control and Government rely on KVM solutions made by IHSE, Germany. For further information please refer to www.ihse.com.

Press contact

IHSE GmbH
Stefan Ruppert
Maybachstrasse 11
88094 Oberteuringen/Germany
Email: stefan.ruppert@ihse.de
Tel: +49 (7546) 9248 59
Web: www.ihse.com