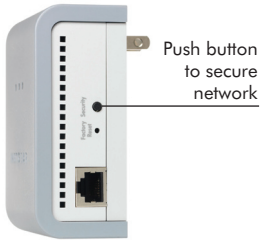


## Extend Your Network Using Electrical Outlets

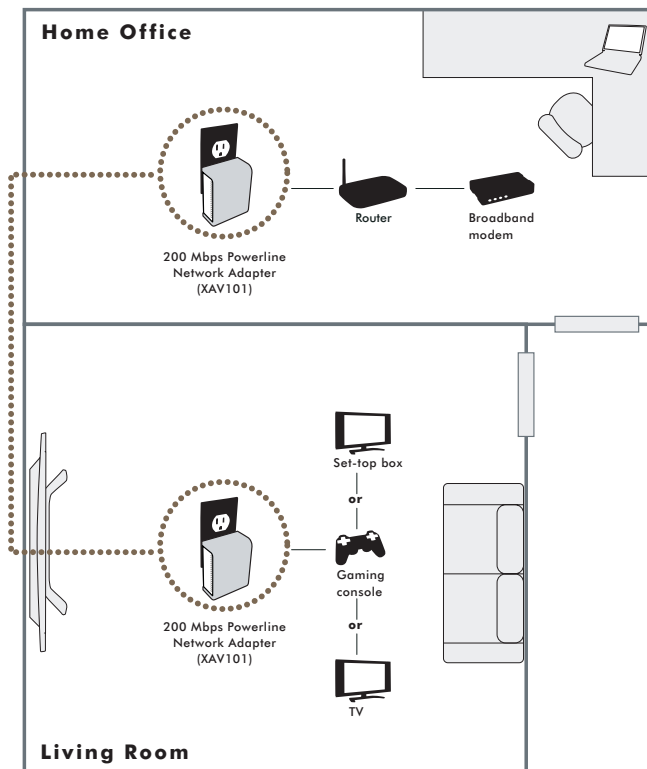


- Turn any electrical power outlet into a high-speed Internet and home network connection<sup>1</sup>
- Easily connect TiVo<sup>®</sup>, Slingbox™, game consoles, or TVs
- Fast enough to stream HD video
- Plug and play: just plug into a wall outlet, no setup required

### Features

- Turns any electrical power outlet into an Ethernet network connection
- Delivers fast 200 Mbps speed†
- Secure your Powerline AV network by just pushing a button
- For use with both wired and wireless routers and gateways
- Simply plug one XAV101 into your router<sup>1</sup>
- Connect a desktop, notebook PC, gaming console, NETGEAR ReadyNAS™, Slingbox™, a DVR or NETGEAR Print Server (PS121)
- 128-bit AES data encryption ensures privacy and security
- Red, yellow, green status LEDs indicate maximum data rate
- Supports Windows<sup>®</sup> Vista™
- HomePlug AV compatible

### Plug-and-play connection of a Powerline Network<sup>1, 2</sup>



**System Requirements**

- For device connection: Available RJ-45 Ethernet port
- Automatic push button security works with all platforms, does not require CD
- To manually modify encryption and settings using CD: Microsoft® Windows® Vista™, 2000 or XP

**Network Ports**

- One 10/100 Mbps Ethernet port
- One 200 Mbps<sup>†</sup> Powerline AV interface

**Power Supply**

- 100-240V @ 50-60 Hz

**LEDs**

- Power
- Status
- Ethernet

**Environmental Specifications**

- Operating temperature: 0°-40 °C (32°-104 °F)
- Operating relative humidity: 10% to 90% non-condensing

**Physical Specifications**

- Dimensions: 98 x 72 x 40 mm (3.86 x 2.83 x 1.57 in)
- Weight: 0.18 kg (0.4 lb)

**Electromagnetic Emissions**

- FCC Part 15 Class B
- CE
- C-Tick

**Power and Safety Regulations**

- UL Certified

**Typical Coverage**

- Up to 5000 square foot home<sup>†</sup>

**Warranty**

- NETGEAR 1-year Warranty

**Package Contents**

- Powerline AV Ethernet Adapter (XAV101)
- 1.51 m (5 ft) Ethernet cable
- Installation guide
- Setup CD
- Warranty card
- Support and information card

**NETGEAR Related Products**

- Network:
  - RangeMax™ NEXT Wireless-N Router (WNR834B)
  - RangeMax™ Wireless Router WPN824)
  - Super-G® Wireless Router (WGT624)
  - Wireless-G Router (WGR614)
  - RangeMax™ NEXT Wireless-N Access Point (WN802T)
  - RangeMax™ Wireless Access Point WPN802)
  - Open Source Wireless-G Router KWGR614)
  - Wireless-G Access Point (WG602)
  - Web Safe 4-port Router (RP614)
- Printer
  - USB Print Server (PS121)
- Storage
  - ReadyNAS NV+ (RND4XXX)
  - Storage Central Turbo (SC101T)
- Multimedia Players
  - Digital Entertainer HD (EVA8000)

<sup>1</sup> Requires use of a HomePlug AV-compatible Powerline device (one (1) XAV101 device included).

<sup>2</sup> XAV101 will coexist, but is not compatible nor interoperable with NETGEAR's Homeplug 1.0 products including XE102, XE103, XE104, XEPS103, XET1001, and WGX102 products and UPA products, HDX101 and HDX111.

Outlets must be electrically connected in order for Powerline devices to provide a network connection between them.

# NETGEAR®

4500 Great America Parkway  
Santa Clara, CA 95054 USA  
1-888-NETGEAR (638-4327)  
E-mail: [info@NETGEAR.com](mailto:info@NETGEAR.com)  
[www.NETGEAR.com](http://www.NETGEAR.com)

© 2008 NETGEAR, Inc. NETGEAR, the NETGEAR Logo, NETGEAR Digital Entertainer Logo, Connect with Innovation, FrontView, IntelliFi, PowerShift, ProSafe, RAIDar, RAIDiator, X-RAID, RangeMax, ReadyNAS and Smart Wizard are trademarks of NETGEAR, Inc. in the United States and/or other countries. Other brand names mentioned herein are for identification purposes only and may be trademarks of their respective holder (s). Information is subject to change without notice. All rights reserved.

\*Free basic installation support provided for 90 days from date of purchase. Advanced product features and configurations are not included in free basic installation support; optional premium support available.

<sup>†</sup>Actual data throughput will vary. Network conditions and environmental factors, including volume of network traffic, building material and construction, and network overhead, lower actual data throughput rate.