



Dell KACE



RayPack[®]

Dell KACE K1000 Edition



Top Benefits

In Sync for your Needs

- Combining K1000 automation and RayPack packaging capabilities enables fast and reliable software deployment
- Utilize our high class applications to find out which packages you need, prepare them according to Best Practices, and get them operational in no time
- Both highly intuitive management solutions provide full service at a minimal price

Economical Advantage Guaranteed

- Significantly speed up your K1000 ROI by using the gratis RayPack for Dell KACE edition to prepare your packages for deployment
- Dell KACE customers benefit from privileged upgrade opportunities to RayPack Professional and Enterprise editions
- Substantially accelerated migration projects and seamless transitions into ongoing management reduce costs
- Know-how conservation & transfer in RayPack's single-source project files

Packaging as Easy as 1-2-3

- Repackaging with the fastest capture engine on the market
- Full-service editors for MSI-based package formats
- Generation of classic (e. g. MSI, MST, MSP) and virtual package formats (e.g. App-V, ThinApp, SWV)¹
- Intelligent modification markup extends the wealth of packaging experience

Minimal Set-Up Time

- Integrating RayPack into your Dell KACE K1000 is a matter of minutes
- Intuitive usability is provided by highly modern user interfaces
- Profile-based settings define task-specific packaging standards

An Enterprise IT Department

has to face many changes nowadays: migration to Windows 7 or 8 (and quite soon Windows 10 as well), virtualization, cloud computing, bring-your-own-device and a lot more. IT managers are asked not only to define strategies for these new subject matters, but also to cut costs and improve efficiencies in all areas of their work, whilst delivering better service to their end-users.

Process Integration is the Buzz Phrase

successful system managers keep aiming for. Nowadays, complex IT environment requirements make it nearly impossible to solve all challenges by using one core application. Therefore, it is of vital importance to integrate separate procedures and applications to build an effective and efficient overall process. Raynet normally covers the Enterprise Application Lifecycle Management with RaySuite, which is powered by the workflow management tool RayFlow. However, there may be reasons to go for different solution architectures for your enterprise IT asset management. The flexible and modular design of Raynet's stand alone solutions enables full integration into various market-leading system management solutions, like Dell KACE:

The Dell™ KACE™ K1000 Systems Management Appliance

can fulfill all of your organization's systems management needs, from initial deployment to ongoing management and retirement across operating systems and hardware platforms. Designed to save you time, and save your organization money, the K1000 appliance is typically installed within one day at a low total cost. Unlike traditional software approaches that can require complex and time-consuming implementation and maintenance, the K1000 appliance delivers a fully integrated solution. It's based on an extremely flexible and intelligent architecture that enables the appliance to be both quickly deployed and continually self-maintained.

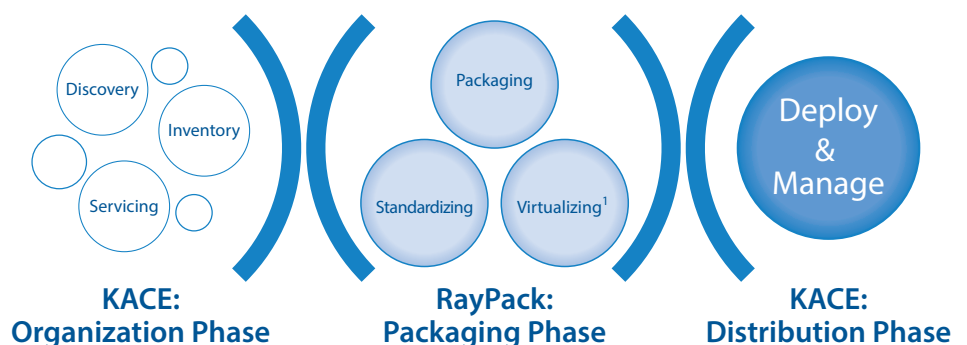
With the Intelligence Raynet and Dell Weave into their Products

RayPack and KACE K1000 Appliance sync up to a perfect management solution, helping small and medium-sized enterprises to save time, money and headaches as a result of our joint expertise.

Depending on Changing Demands

and company growth, customers can scale this flexible solution along with their ever-changing business needs without having to undergo a full redesign. Solving current issues is commonplace, but preventing future issues at the very same time is what separates the leaders from the pack in the long run.

United Specialists for Your Success



RayPack Components & Competences

Raynet is not only one of the leading international service providers for Application Life-cycle Management, but is also the service provider with the most certified trainers and packagers worldwide. The experience gained over the past decades from hundreds of successful projects, trainings, and packaging factory implementations, is all molded into RayPack.

We do not only talk about packaging – we live it! Therefore, the main mission of RayPack is to support professional packagers in operating their packaging projects successfully and efficiently.

Raynet has equipped RayPack (as well as the whole RaySuite product family) with a highly modern user interface. When Windows Installer procedures reach their limitations, RayPack is ready to raise the bar. Intuitive wizards guide the user through classical packaging tasks – beginning with repackaging, then moving on to the generation of Windows Installer Transform files, and finally coping with the realization of complex packaging requirements. Wrapped into a clean-cut state-of-the-art user interface, RayPack's functional core is an assistant that never fails. Our framework simultaneously provides novice support with the help of visual interface elements and wizards, and the means to master advanced levels of packaging.



With **PackRecorder**, users run the market's fastest capture engine for system snapshots. It recognizes added, manipulated and removed objects of various types:

- Files & Folders
- Registry
- Shortcuts & INI Files
- Services & System Variables
- Permissions on Files, Folders, and Registry

Providing reusable system snapshots is the technical cornerstone for the execution of sophisticated methods of packaging related analysis.

Our editor allows the adjustment of exclusion rules directly from the capture result¹. Besides being a nice convenience, it is also one of the uncounted features which ensure that PackRecorder initiates repackaging processes of the highest quality. The beneficial results include, minimal validation measures, minimal target system interference and noticeably faster delivery times overall.



With **PackDesigner**, users create, edit, and validate packages for systems with x86 and x64 architectures.

It is not just another tool for editing package resources. It is THE editor experienced packagers have always wished for.

Beneath the polished finish of simplified, wizard-based procedures (e. g. for permission control, run-time operations, database interaction, and IIS population¹), the intelligent PackDesigner engine guarantees quality and security.

PackDesigner does not only provide everything required to prepare silent software installation routines, but offers an elaborate set of setup design features as well. Vendors and developers who need to prepare the professional publication of their software products, are highly welcomed to be a part of the RayPack user community.



With **PackTailor**, users extract installer adjustments by applying the easiest of methods: the simple walk-

trough of the installation's user interface sequence, which is already contained in the MSI resources. As soon as the results of user interaction have been traced, analyzed, and – where required – manually fine-tuned with the PackTailor Wizard, RayPack generates a transform file that is ready for deployment.

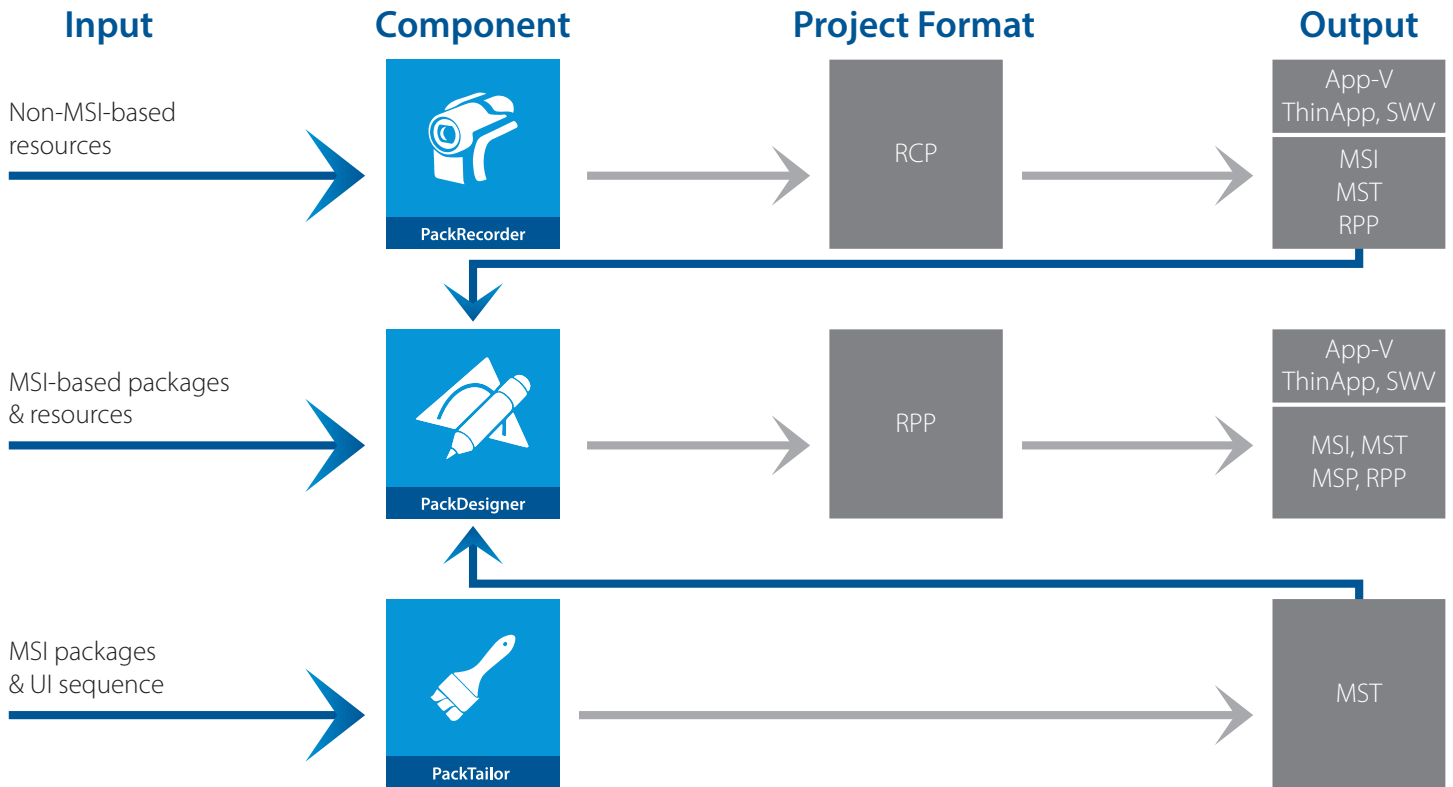
Preparing a set-up that runs in the background without requiring user interaction ("silent installation") has now become a matter of just a few mouse clicks – like MSI branding and localization.

Feel free to trigger PackTailor (or any other RayPack component) from your workflow management system - the integrated command line interface has all the necessary options to do so.

¹ Actual feature set depends on the RayPack product edition. For further details visit www.raypack.net/edition



Typical RayPack Use Cases



Functional Highlights

Brilliant Management-Interfaces

- MSI syntax suggestions (e. g. properties & paths)
- Direct installer database table manipulation (incl. attributes editor, maintenance of referential integrity, search & replace on tables and databases, etc.)
- Properties Manager
- Easy one-click file replacement

Maximal Resource Control

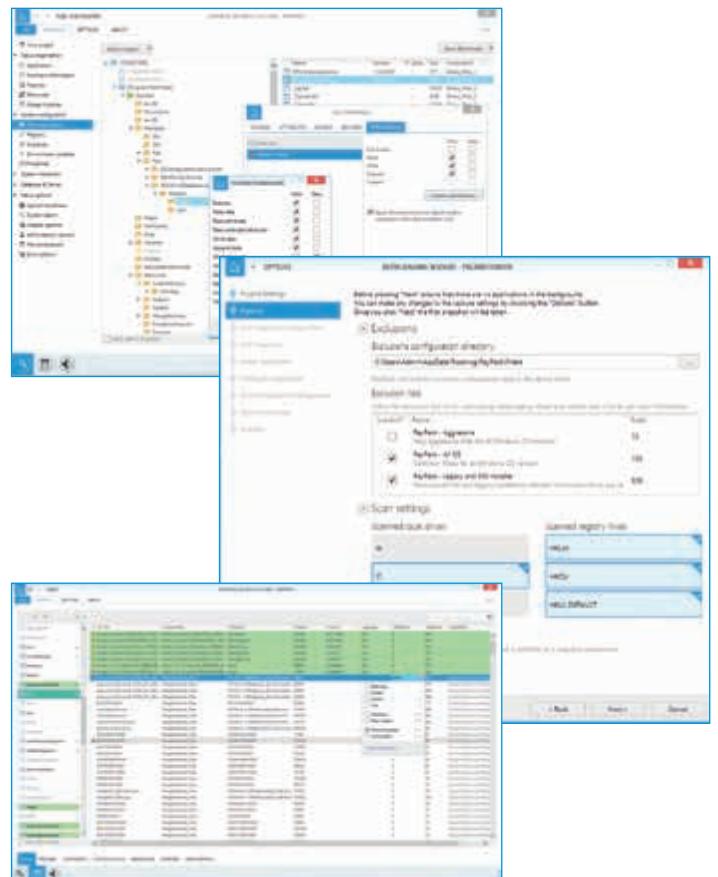
- MSI rebuild & CAB splitting
- Tailoring and tuning vendor MSI by installer UI interaction
- Merge module support
- Run-time operations and permission control
- COM harvesting

Additional Modules for Advanced Needs

- ICE validation with individually customizable rule sets
- Inline exclusion rule management
- System search
- Scheduled tasks

Personal Trainer for Packaging Expertise

- Live highlighting and change tracking
- Transparency of wizard effects on data structures





Special RayPack Edition for Dell KACE K1000 Customers

Core

- Modern RaySuite 3.0 user interface style
- Profile Management
- Get Started Guide & In-App help
- Command Line Tools

PackRecorder

- Create & edit capture legacy project files
- Semi-automated exclusion creation
- Central exclusion list management via settings profiles

Support

- Raynet Support via email
- Raynet Knowledge Base
- Online-Tutorials

PackDesigner

- Edit & create MSI-based packages / projects
- Create Windows Installer transforms (MST)
- Visual Designer & Advanced Mode
- CAB Management
- Table reference & change tracking
- Permissions control for files / folders / registry
- Easy one-click file replacement
- Text-Changes (supporting regex) at run-time
- Advanced table manipulations
- System search
- Merge Modules (usage + library)
- Validation against ICE & Windows Logo
- Error highlighting + suggestions
- Integrated standard MSI properties / folders / action selector

PackTailor

- Tailoring and tuning vendor MSI by installer UI interaction

**Are you interested in special edition upgrade opportunities for Dell KACE customers?
Please feel free to contact us via sales@raynet.de**

Further RayPack Information & Services

The latest news, release information and the possibility to sign up for a free Enterprise Edition trial without obligation, are available at www.raypack.net.

Additionally, we frequently offer live webinars to present the latest RayPack feature implementations, get real world industry feedback, and discuss possible solutions to contemporary packaging challenges.

The Raynet Knowledge Base (<http://knowledgebase.raypack.net>) is a source for best practice tips & tricks, a place for sharing learned lessons with the community, and the starting point for power users who want to go the extra mile to achieve product-guru status.

Also check out our video tutorials with essential information for an easy startup. Follow the step-by-step instructions to pack application projects in no time! Lean back, enjoy a cup of coffee, and relish in your first steps into the world of RayPack!



About Raynet

Raynet GmbH is a leading and innovative service and solution provider in information technology and specialized in the architecture, implementation and operation of all tasks within "Application Lifecycle Management". Raynet's Headquarters is in Germany and presently has additional locations throughout Germany, the USA, Poland, UK and Belgium.

For over 15 years, Raynet has supported hundreds of customers and partners with its products and solutions for enterprise application management projects worldwide. These include license management, software packaging, software deployment, migrations, client engineering and much more. Additionally, Raynet maintains and cultivates strong partnerships with leading companies in Application Lifecycle Management.

Raynet products and solutions are unique in design and functionality. Their development is highly driven by our customers and partners who play a big role in the development of our products and are a key reason why our products are always cutting edge. Whether you want to introduce a new deployment tool or to start a SAM project, whether you want to plan a packaging factory or do a migration – Raynet is the choice for best-of-breed-practices in services, products, and solutions for Application Lifecycle Management.

Next Steps

For more information, please visit our website: www.raynet.de or contact our sales team on +49 5251 54009-0 or sales@raynet.de

About Dell Software

Dell Software helps customers unlock greater potential through the power of technology – delivering scalable, affordable and simple-to-use solutions that simplify IT and mitigate risk. This software, when combined with Dell hardware and services, drives unmatched efficiency and productivity to accelerate business results. www.dellsoftware.com.



Technologiepark 20
33100 Paderborn, Germany
T +49 5251 54009-0
F +49 5251 54009-29
info@raynet.de

www.raynet.de



Dell KACE
www.software.dell.com