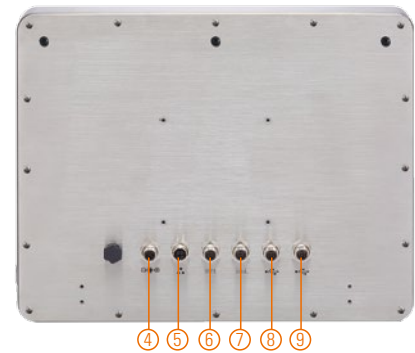
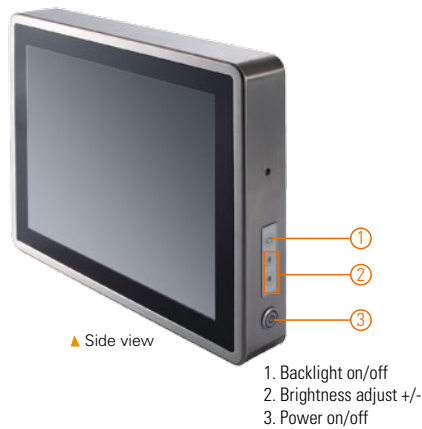
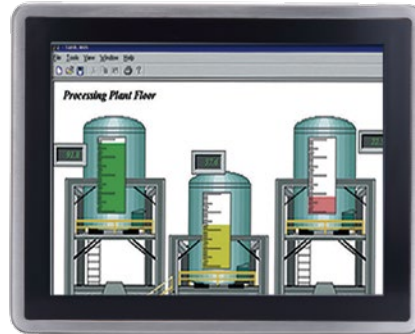


# GOT817L-511

17" SXGA TFT IP66 & IP69K-rated Stainless Steel Fanless PCT (or Resistive Touch) Panel Computer with Intel® Core™ i5-7300U Processor and Flat Bezel Design (-20°C to +50°C)

## Features

- 17" SXGA TFT flat bezel LCD display
- IP66/IP69K-rated (NEMA 4X) water/dust/corrosion-proof design
- Full stainless steel enclosure with type 316
- -20°C to +50°C wide operating temperature range
- Fanless design with Intel® Core™ i5-7300U processor
- Optional Wi-Fi/3G kit for wireless network connectivity
- 9 to 36 VDC wide range power input
- Supports suspension and VESA mount
- M12 type connectors for harsh environments



## Introduction

The 17-inch GOT817L-511 is specially designed for food processing applications. Its IP66-rated stainless steel housing protects entire system from damage of water, powder and dust. It also supports a wide operating temperature range from -20°C to +50°C. Thus, this robust unit is best suited for extreme humidity, dusty or wet spaces in food factories or kitchens and more harsh applications.

### Full IP66 and IP69K Certified

The GOT817L-511 adopts a water/dust-proof housing design with five IP66-rated M12 I/O connectors and IP69K that ensures the product's ability to resist ingress of high temperature and high pressure water. It passed entire system IP66 test by SGS, and verified salt mist test. Additionally, it was tested by a spray nozzle with high temperature water (+80°C), a flow rate of 14 to 16 L/min and a nozzle hold with distance 10 to 15 cm away from the device at angles of 0°, 30°, 60° and 90° for 30 seconds. The GOT817L-511 is qualified to meet harsh environment applications.

### Wide Temp. (-20°C to +50°C) & Anti-vibration (1G) Design

The GOT817L-511 featuring fanless and noiseless design supports a wide operating temperature range from -20°C to +50°C. Besides, the patent of anti-vibration for SSD ensures system reliability and stability.

## Specifications

Enclosure	Stainless type 316	
LCD Panel	Display Type	17" SXGA TFT LCD
	Brightness (cd/m <sup>2</sup> )	350 nits LCD
	Resolution	1280 x 1024
	Viewing Angle (H/V)	170°/160°
Main System	CPU	Intel® Core™ i5-7300U 3.5 GHz (Kaby Lake)
	Chipset	SoC integrated
	System Memory	1 x 260-pin DDR4-2133 SO-DIMM, up to 16GB
	BIOS	AMI UEFI BIOS
	Storage	1 x 2.5" SSD HDD or 1 x 2.5" SATA HDD (9.5 mm height)
	Watchdog Timer	255 levels, 1 to 255 sec.
	Onboard Graphics	Integrated in Intel® GFX

## Specifications

I/O Connector	2 x RS-232/422/485 (default RS-232, A-coded) 4 x USB 2.0 (A-coded) 1 x 10/100/1000 Mbps Ethernet supporting PXE and LAN wake-up (Intel® I210-IT; X-coded)
Expansion Interface	1 x Full-size PCI Express Mini Card slot 1 x Half-size PCI Express Mini Card slot
Touchscreen	5-wire resistive touch or projected capacitive multi-touch
Power Input	9 to 36 VDC
Power Consumption	67.5W
Dimensions	415.92 mm (16.4") (W) x 55 mm (2.2") (D) x 348.34 mm (13.7") (H)
Packing Dimensions	615 mm (24.2") (W) x 250 mm (9.84") (D) x 585 mm (23") (H)
Weight (net/gross)	6.94 kgs (15.3 lb)/10.2 kgs (22.5 lb)
Operating Temperature	-20°C to +50°C (-4°F to +122°F)
Relative Humidity	10% to 95% @ +40°C, non-condensing
Operation Vibration	1G, 5 - 500Hz, random for 2.5" SSD
Certifications	CE

\*W.T.: Wide temperature. All W.T. supported products have to be sorted by Axiomtek.

## Packing List

- 1 x GOT817L-511
- 1 x Driver DVD
- 1 x DC cable

## Ordering Information

GOT817L-511-C-DC	17" SXGA fanless IP66 & IP69K-rated stainless steel touch panel computer with Intel® Core™ i5-7300U, projected capacitive touch screen, 420 nits LCD and 9 to 36 VDC power input
GOT817L-511-C-RF-DC	17" SXGA fanless IP66 & IP69K-rated stainless steel touch panel computer with Intel® Core™ i5-7300U, projected capacitive touch screen, 420 nits LCD and 9 to 36 VDC power input and Wi-Fi/3G
GOT817L-511-R-DC	17" SXGA fanless IP66 & IP69K-rated stainless steel touch panel computer with Intel® Core™ i5-7300U, 5-wire flat resistive touch screen, 9 to 36 VDC power input
GOT817L-511-R-RF-DC	17" SXGA fanless IP66 & IP69K-rated stainless steel touch panel computer with Intel® Core™ i5-7300U, 5-wire flat resistive touch screen, 9 to 36 VDC power input and Wi-Fi/3G

## Optional Accessories

594B8122100E	Water-proof COM cable (1.8 m)
594B8152710E	Water-proof LAN cable (1.8 m)
594B8152820E	Water-proof USB cable (1.8 m)
50966D45010E	Adapter 24V 120W, M12 A-code 5P, LTE120ES
822B8120070E	GOT812 keyboard bracket (with keyboard)

\*Specifications and certifications may vary based on different requirements.

## Optional EOS Installation

Windows® 10 IoT

## Optional OS Installation

Windows® 10

## Dimensions

