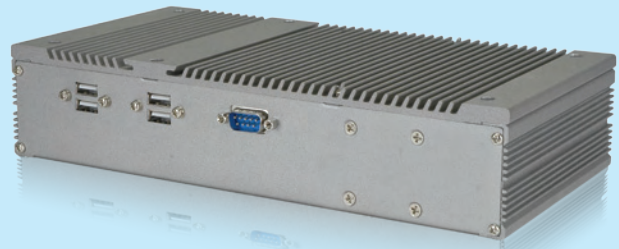


EBC-2102

Embedded Chassis for EPIC NANO Series



Features

- ◆ Fanless system with Intel® Atom™ D525 1.8GHz dual-core processor
- ◆ Complete I/O Interfaces, including dual GbE, four COM, six USB, LPT
- ◆ Single 12V DC power input support AT/ATX mode
- ◆ DDR3 supports up to 4GB (D525/D425)



Specifications

Model Name	EBC-2102	
Chassis	Color	Cool Gary
	Dimensions	262 x 134 x 56 mm
	System Fan	1 x 4cm (Optional)
	Chassis Construction	Aluminum alloy with heavy duty metal
Motherboard	Motherboard Model	NANO-PV-D5251-R10, NANO-PV-D4251-R10, NANO-PV-N4551-R10
	M/B Size	EPIC (165mm x 115mm)
	Processor	refer to SBC
	Chipset	refer to SBC
Storage	System Memory	D525/D425 Memory supports up to DDR3 4GB, N455 memory supports up to DDR3 2GB
	Hard Drive	1 x 2.5" SATA HDD bay
System Function	CompactFlash®	1
	USB 2.0	6
	Ethernet	Dual Realtek 8111E GbE
	RS-232	4
	LPT	1
	Display	1 x VGA
	Audio	3 x Audio jack (Line-in, Line-out, Mic-in)
	Wireless	1 x 802.11 b/g/n (optional for wireless model)
	Expansions	1 x PCI-104, 1x PCIe Mini card slot reserved for wi-fi module
	Power	Power Input
Power Consumption		2.21A @ 12V (Intel® Atom™ D525 with 2GB 1066MHz DDR3) 2.11A @ 12V (Intel® Atom™ D425 with 2GB 1066MHz DDR3) 2.00A @ 12V (Intel® Atom™ N455 with 2GB 1066MHz DDR3)
Reliability	Mounting	Desktop, wall mount
	Operating Temperature	-10°C ~ 50°C fanless, -10°C ~ 60°C with CPU fan or system fan
	Operating Shock	Half-sine wave 3G, 11ms 3 shocks per axis
	Operating Vibration	Meet MI-STD-810F 514.5C-1
	Weight (Net/Gross)	1kg

1

Industrial Computing Solutions

2

Video Capture Solutions

3

Embedded Computing Solutions

4

ORing Network Communication

5

Power Supply/Peripherals

6

Panel Solutions Introduction

Packing List

1 x EBC-2102 Chassis
1 x 12V 60W power adapter (P/N: 63000-FSP060DBAB1552-RS)
1 x Power cord
1 x Wall mount kit
1 x Screw set
1 x Utility CD/QIG
1 x One Key Recovery CD

Ordering Information

Part No.	Description
EBC-2102-R10	Embedded Chassis for NANO-D5251/D4251/N4551, compatible with 2.5" SATA/CFII hard drive, 4x COM, 6x USB, 1x LPT, 60W power adapter silver, RoHS
EBC-2102W-R10	Embedded Chassis for NANO-D5251/D4251/N4551, compatible with 2.5" SATA/CFII hard drive, 4x COM, 6x USB, 1x LPT, 802.11 b/g/n wireless, 60W power adapter silver, RoHS
19100-00027-RS	4010 system Fan, +12V ball bearing
NANO-PV-D5251-R10	EPIC with Intel® Atom™ D525 1.8GHz, DDR3, VGA/LVDS, Dual GbE, USB 2.0, CF II, audio and SATA 3Gb/s, RoHS
NANO-PV-D4251-R10	EPIC with Intel® Atom™ D425 1.8GHz, DDR3, VGA/LVDS, Dual GbE, USB 2.0, CF II, audio and SATA 3Gb/s, RoHS
NANO-PV-N4551-R10	EPIC with Intel® Atom™ N455 1.66GHz, DDR3, VGA/LVDS, Dual GbE, USB 2.0, CF II, audio and SATA 3Gb/s, RoHS