



RAYMANAGESOFTi[®]

A New Generation of Software Deployment



RAYVENTORY[®]
is part of RayManageSofti

RayManageSofti is part of RaySuite.

Release Notes
RayManageSofti
11.0

•**rayNET**

**Copyright © Raynet GmbH (Germany, Paderborn HRB 3524). All rights reserved.
Complete or partial reproduction, adaptation, or translation without prior written permission is prohibited.**

Release Notes
for release 11.0 *infinity*

Raynet and RayFlow are trademarks or registered trademarks of Raynet GmbH protected by patents in European Union, USA and Australia, other patents pending. Other company names and product names are trademarks of their respective owners and are used to their credit.

The content of this document is furnished for informational use only, is subject to change without notice, and should not be construed as a commitment by Raynet GmbH. Raynet GmbH assumes no responsibility or liability for any errors or inaccuracies that may appear in this document. All names and data used in examples are fictitious unless otherwise noted.

Any type of software or data file can be packaged for software management using packaging tools from Raynet or those publicly purchasable in the market. The resulting package is referred to as a Raynet package. Copyright for any third party software and/or data described in a Raynet package remains the property of the relevant software vendor and/or developer. Raynet GmbH does not accept any liability arising from the distribution and/or use of third party software and/or data described in Raynet packages. Please refer to your Raynet license agreement for complete warranty and liability information.

Raynet GmbH Germany
See our website for locations.
www.raynet.de

Table of Contents

Introduction	4
New Features	5
Improvements	13
Highlighted Resolved Issues	16
Resolved Issues	17
Known Issues	21
RayVentory System Requirements	22
Hardware Requirements	22
Prerequisite Software	23
RayManageSofti System Requirements	26
Hardware Requirements	26
Prerequisite Software	27
Compatibility	34
Compatible Components	34
Upgrading from Earlier Releases	35
Additional Information	36

Introduction

RayManageSofti 11.0, just like its predecessors, will continue to provide a complete set of products for software and operating system (OS) deployment, as well as security and patch management. The software includes four components for deploying, patching, and securing applications and operating systems, all built on a common infrastructure that includes IT asset discovery, inventory and software asset management. The client-centric architecture leverages existing IT hardware to speed up implementation and reduce costs for mid-size and large organizations.

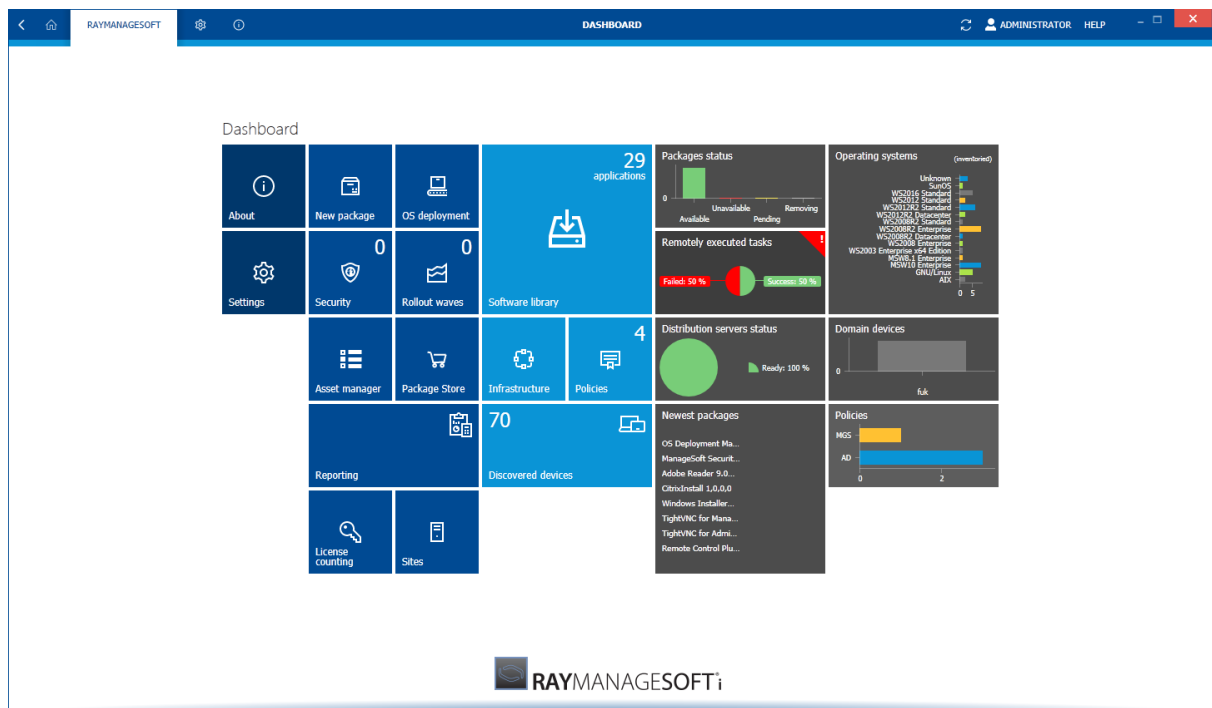
The release of RayManageSofti 11.0 has a great deal to do with the feedback from our customers since some of its new features and enhancements come as a direct result of that communication. The new features in version 11.0 meet the needs of our current customers and the demand of the current market. Some of those demands are in the area of software asset management (SAM) where enterprises are looking for a well-rounded, comprehensive deployment product that also targets license counting, detailed reporting, and inventorying of software and hardware, just to name a few.

Welcome to RayManageSofti 11.0.

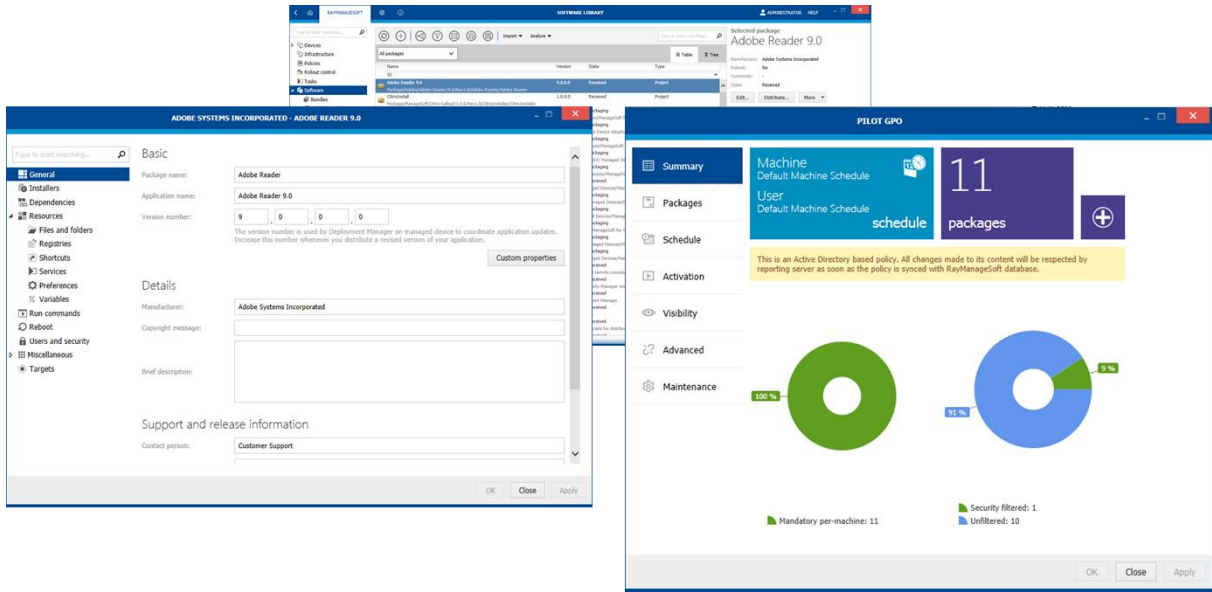
New Features

This chapter of the Release Notes gives an overview about the new features that have been added to RayManageSofti in 11.0.

[RMS-526; RMS-2479; RMS-2576; RMS-3088; RMS-3209] The User Interface of RayManageSofti has been Changed to Align to the Design Guidelines of the RaySuite Products

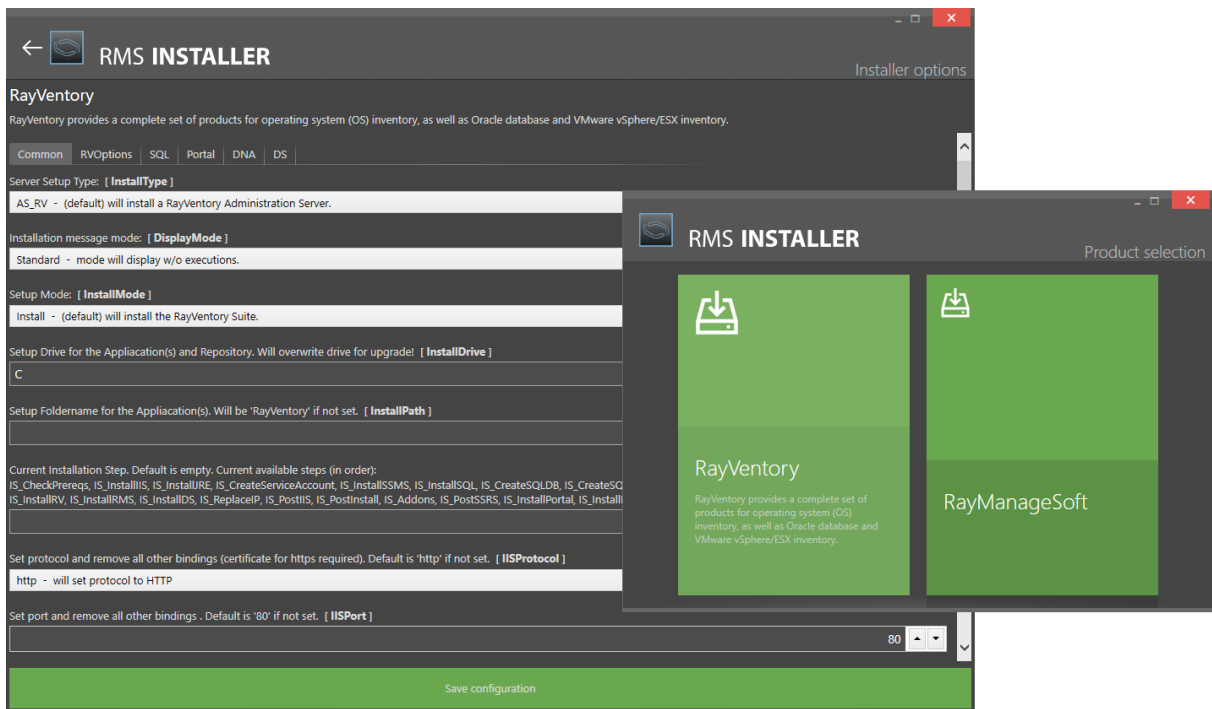


The user interface of RayManageSofti is now similar to the interfaces that are used by all other Raynet products. This vastly improves the usability and orientation for users of RayManageSofti. Furthermore, for users of other Raynet products, there will be a familiar look and feel when using the new RayManageSofti for the first time.



[RMS-2006] The Setup of RayVentory and the Setup VBS Script Integration have been Improved

The installer which is used for the setup of RayVentory and for the setup of the VBS script integration has been reworked to be more user friendly. When setting up RayVentory, the IIS bindings in advance of the RayVentory Portal setup and the IE settings will now be checked. Furthermore the error logging has been improved and there is now the possibility to select a cluster instance including an AD account or group with the necessary authorization.

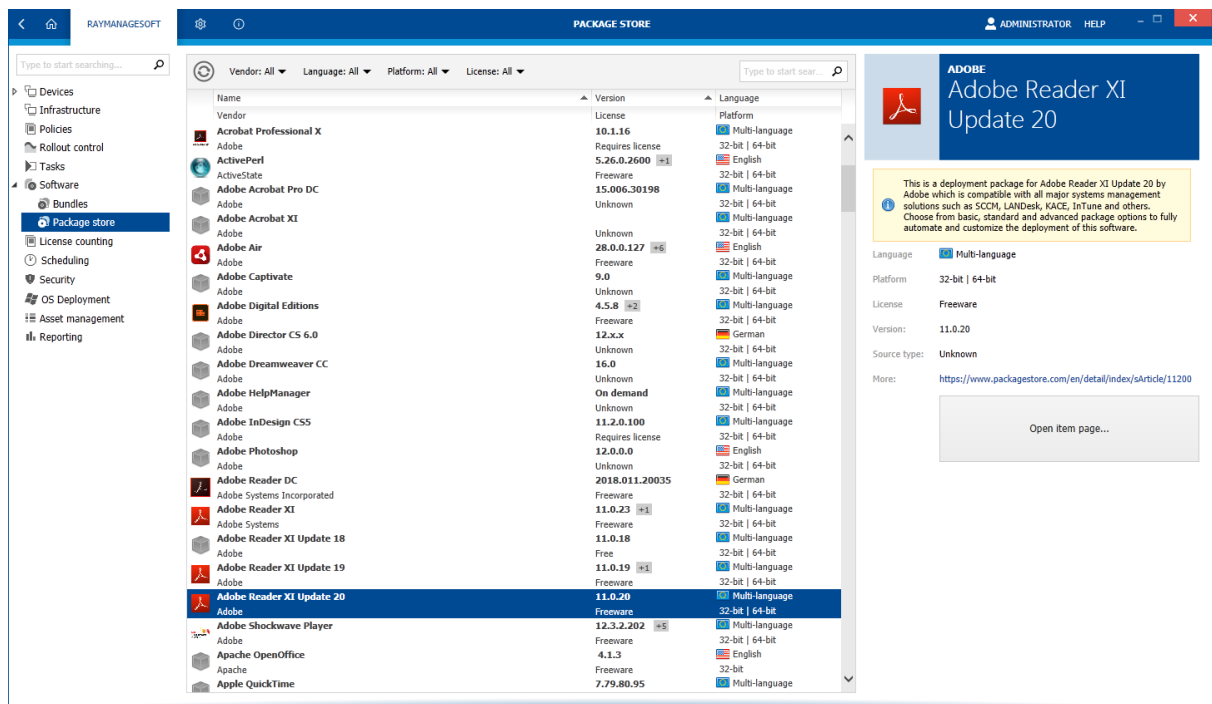


[RMS-2242; RMS-2589; RMS-2598; RMS-2599; RMS-2600; RMS-2601; RMS-2610] The Logging in RayManageSofti has been Extended

With this release, the logging in RayManageSofti has been vastly extended. The additional logging includes the logging of element removal including the identification data, the logging of license data entries, the logging of the removal of site objects, logging of sidebar navigation, and the logging of the user who executed a delete action.

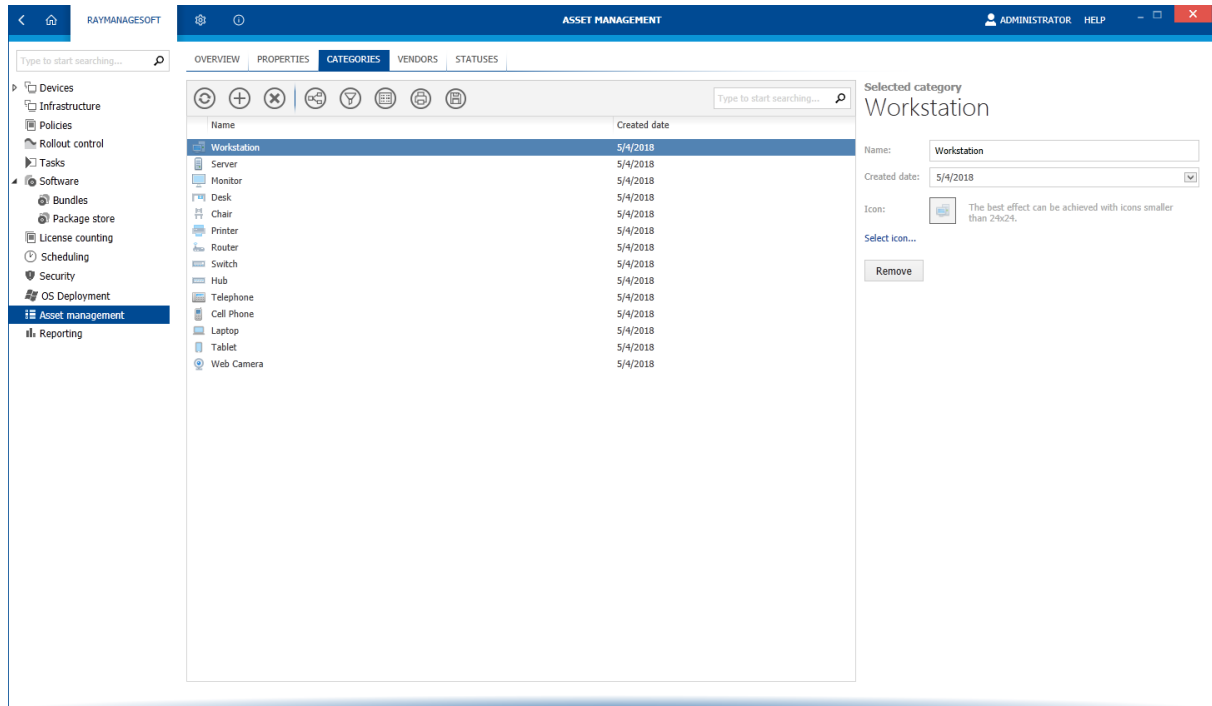
[RMS-2420] There is now an Integration of the Package Store

The Package Store has now been integrated into RayManageSofti. This enables for an easier and more direct deployment of packages which have been bought in the Package Store.



[RMS-2416; RMS-2417; RMS-2565; RMS-2683; RMS-2903; RMS-2940] A New Asset Management Snapin has been Added to RayManageSofti

A brand new Asset Management snapin has been added to RayManageSofti. This feature allows for the addition of new assets which can afterwards be linked to already existing objects.



[RMS-2651; RMS-2652] Debian Support has been Added to RayManageSofti

Ndrtrack has been improved and is now able to generate software inventories on Debian based machines, such as Ubuntu.

[RMS-2944] Oracle and VMware Discovery has been Added

It is now possible to execute Oracle and VMware discovery using RayVentory Portal.

[RMS-2967, RMS-3044] Uploads Via Curl-lib have been Implemented

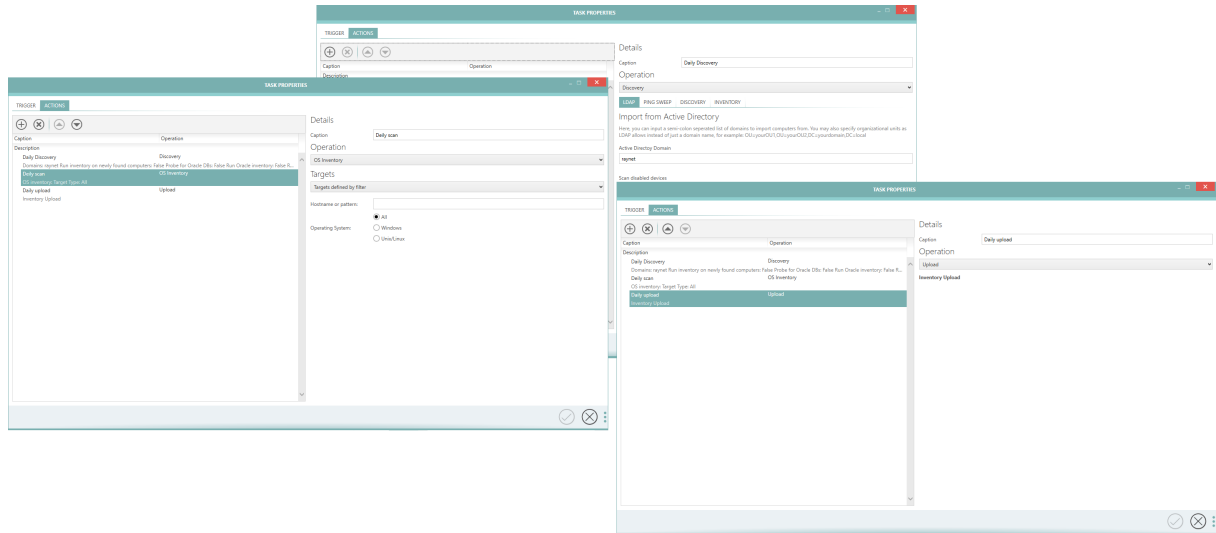
As an alternative to uploads which are using the `uploader.so`, uploads using curl-lib have been implemented.

[RMS-2972] Support for Windows 10 Version 1703 and Windows 10 Version 1709 has been Added

With this release support for Windows 10 Version 1703 and Windows 10 Version 1709 has been added to RayManageSofti.

[RMS-2986; RMS-3088] Scheduling has been Added to RayVentory Portal

The scheduler has now been implemented into RayVentory Portal.



[RMS-2994] A Credential Manager has been Added to RayVentory Portal

The credentials that are necessary for the different inventory methods can now be managed with the newly added **Credential Manager**.

[RMS-3069] The Security Patch Management Library Dropdown Now has a Third Party Option

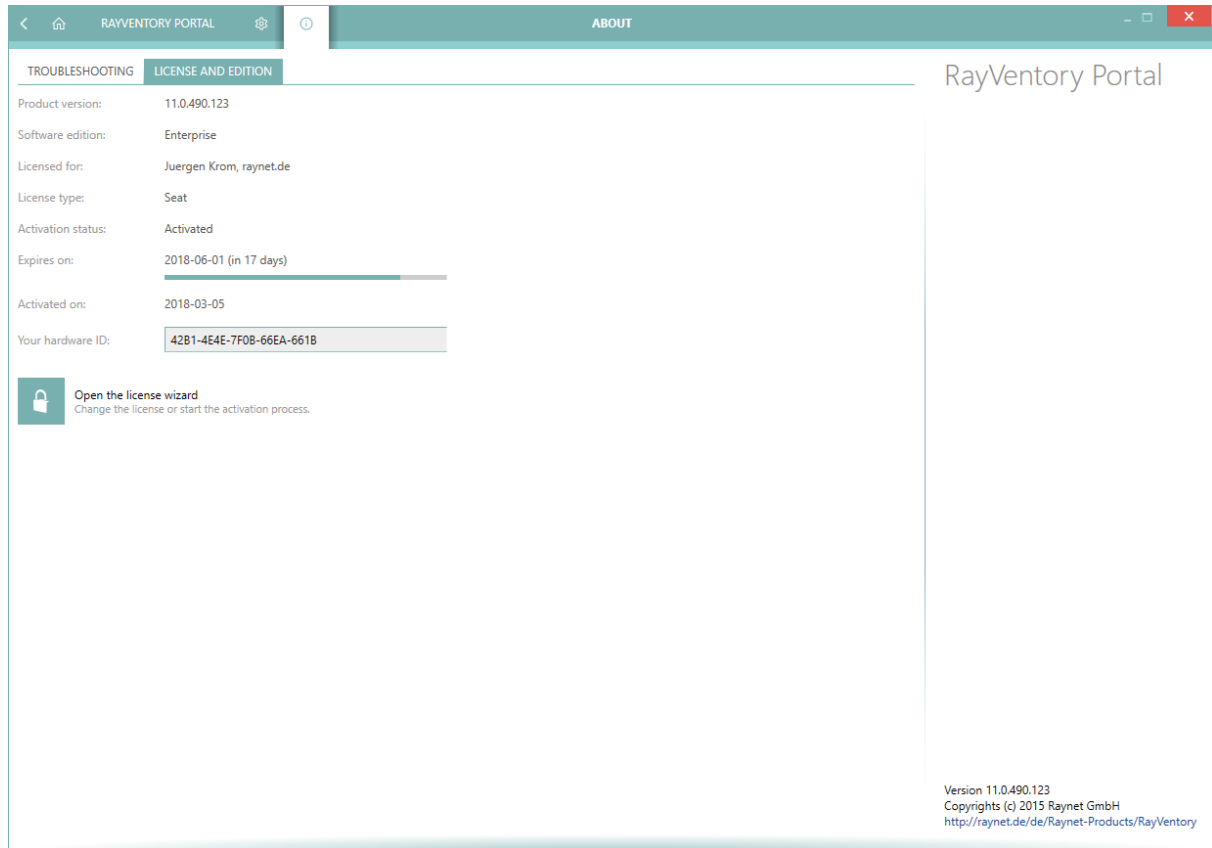
A new third party option has been added to the Security Patch Management library dropdown. Previously only Microsoft related dropdowns were available.

[RMS-3110] RayVentory Portal Now Supports HTTPS Upload

Support for HTTPS upload has been added to RayVentory Portal.

[RMS-3126] A Separate Licensing has been Added to RayVentory Portal

A separate licensing has been added to the new RayVentory Portal user interface.



[RMS-3133; RMS-3188] The Preferred Credentials of the Inventory Tools is Now Filled on a Successful Connection

When a successful connection has been established and there is not yet any data stored as preferred credentials, the data is now automatically filled.

[RMS-3146] RIW Now Gets Information on Specific Editions for Certain Microsoft Products

RIW now gets the specific edition information for Windows Server, SQL Server, Microsoft Exchange, Hyper-V, Skype for Business, and Microsoft Sharepoint.

[RMS-3159] The Connection Test for RIW has been Improved

RIW now has a more reliable connection test.

[RMS-3174] RayVentory Portal Now Supports the Microsoft System Center VM Manager

RayVentory Portal can now discover and import Hyper-V hosts from the Microsoft System Center VM Manager.

[RMS-3184] A Tool for the Automation of RIW and RIU has been Added

A tool has been added that can be used to run RIW and RIU in an automated mode.

[RMS-3200] The New Distribution Server Lite is Now a Part of RayManageSofti

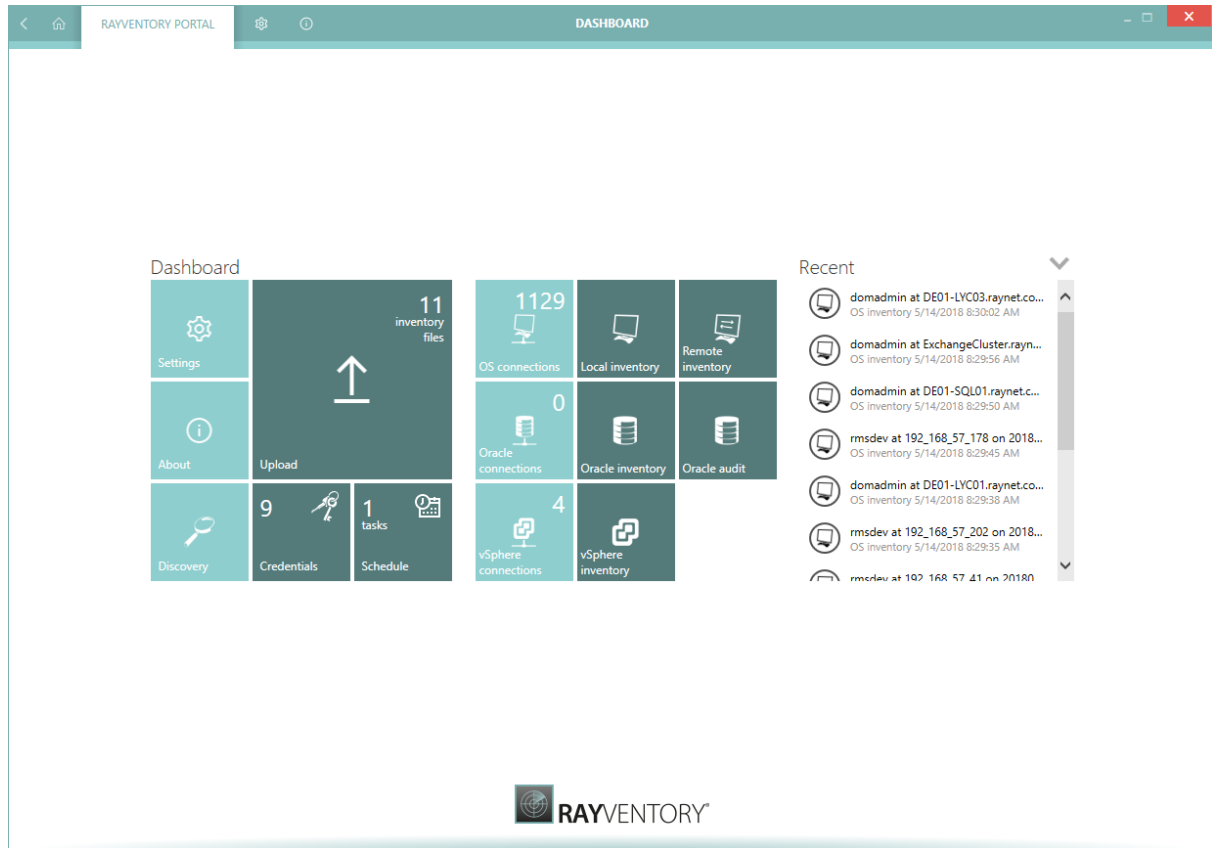
A smaller version of the Distribution Server has been added to RayManageSofti. The new Distribution Server Lite can be used as a substitute for or in combination with the normal Distribution Server.

[RMS-3211] All RayManageSofti and RayVentory Reports have Received an Overhaul

All reports for RayManageSofti and RayVentory have been reworked in order to offer more information and a better overview.

[RMS-3212] The RayVentory Portal Admin UI has been Replaced by a Standalone Version of RayVentory Portal

Instead of the RayVentory Admin UI there is now a standalone version of RayVentory Portal available.



[RMS-3215] Some Adjustments have been Made to the Oratrack.xml.enc

There have been some improvements to the `oratrack.xml.enc`. As a result, more information is now made available.

[RMS-3216] New Oracle Reports have been Added

New reports for oracle have been added to RayManageSofti.

[MRS-3217] Oratrack can Now Run Queries in the LMS Script File

If there are queries present in the LMS script file, oratrack can now detect the queries and run them.

Improvements

This chapter of the Release Notes gives an overview about the improvements that have been added to RayManageSofti in 11.0.

[RMS-404] A Report About the State of the RayManageSofti Services on the Distribution Servers, Administration Servers, and Managed Devices has been Added

There is now a report available which shows the state of the RayManageSofti Services on the distribution servers, administration servers, and managed devices which contains the columns **Computer Name**, **Name of Service**, and **Status of Service**.

[RMS-1427] The Linux / Unix Connection now also Works with OpenSSH 6.9 and Later

The Linux and Unix connection is now working with the OpenSSH versions. Previously, only OpenSSH versions prior to 6.9 were supported.

[RMS-2065] New Inventory Agents have been Implemented

New inventory agents for different types of inventories have now been implemented. This includes for example a new oracle inventory agent and the new ORATRACK.

[RMS-2385] The Overview of the License Counting Snapin has been Improved

The rows where the license count has been exceeded are now highlighted in red.

[RMS-2386] There is Now an Expiration Column in the License Counting Snapin

Similar to the report the license counting snapin now has an expiration column.

[RMS-2529] Logging has been Added to the Remote Console

In order to make it easier to analyze possible issues with the console, logging has been added to the remote console.

[RMS-2549] A Refresh Button has been Added to the Dashboard

There is now a **Refresh** button available on the RayManageSofti Dashboard that can be used to force a manual reload of the data which is used on the Dashboard.

[RMS-2551] The Task Details Pane Now Displays FQDN Values

Since there might be environments which contain devices which share a hostname, the task details pane now displays FQDN values instead of hostnames.

[RMS-2553] The Packages Detected On List Now Displays FQDN Values

Since there might be environments which contain devices which share a hostname, the packages detected on list now displays FQDN values instead of hostnames.

[RMS-2554] The Licenses List in the License Counting Snapin Now Displays FQDN Values

Since there might be environments which contain devices which share a hostname, the licenses list in the license counting snapin now displays FQDN values instead of hostnames.

[RMS-2609] Bundles, PackageStore, and Scheduling are Available from the Dashboard Now

The **Bundles** snapin, the **PackageStore** snapin, and the **Scheduling** snapin are now also available from the dashboard. Previously, not all snapins were available there.

[RMS-2701] Direct Links to the Online Help is now Available

Everywhere where the description in the user interface refer to the Online Help content, a direct link to the help is now available.

[RMS-2716] The Package Editor Install Locations Option has been Improved

There were some changes to the install locations option in the package editor.

[RMS-2946] The Ability to Use an Encrypted User and Password for the Inventory Upload has been Added to the Ndrack.sh

A command line option which can be used to specify a file which contains an encoded user and password has been added to the `ndrack.sh`.

[RMS-3025] Java and SWT for Solaris have been Updated

SWT and Java for the Solaris package have been updated to more recent versions.

[RMS-3059] The Overview Page in the Security Manager is Refreshed After the Status of a Patch File Changes

The Overview page in the Security manager is now automatically refreshed after a status change of a patch file occurs, therefore always showing the latest information.

[RMS-3082] The License Creator Files are Now in Alignment with the Application Standards

The fields inside the create license wizard now fit the application standards and there are no more problems with either margin or height of the rows.

[RMS-3084] The Ability to Select Multiple Groups in the Security Filtering has been Added

It is now possible to select more than one group in the security filtering of a policy.

[RMS-3087] The New Empty Filter Group Option in the AddToPolicy Wizard is Available to more Users

Now, not only domain administrator but also users with the right to create groups in the ManageSoft OU can use the **New empty filter group** option in the **AddToPolicy** wizard.

[RMS-3100] The Ability to Disable Network Scans on RE Targets has been Added

A new setting for the Deployment manager has been added which can be used to disable the network scans on RE targets.

[RMS-3109] Bind by Inventory Now Considers VMware Inventories

The bind by inventory data has been improved and is now able to consider VMware inventories or to fall back to the normal binding when there is insufficient data for binding.

[RMS-3131] An Error is Created if the Permissions are not Sufficient for any Successful Queries

Instead of creating an empty inventory an error is now being created when the privileges are not sufficient to execute any successful queries.

[RMS-3214] The Allow Service to Interact with Desktop Flag for the MgsRebuildService has been Disabled

For the deployment of an operating system to a bare machine the **Allow service to interact with desktop** flag for the `MgsRebuildService` which is installed by the `mgssysprepclient.exe` has now been disabled.

Highlighted Resolved Issues

The following is the list of highlighted issues that have been resolved in RayManageSofti in 11.0.

[RMS-2275] OS Deployment Fails to deploy OS Image

To improve the deployment of sysprep Windows 10 images, an additional command has been placed in the `PostImageTask.cmd`. This command guarantees that the machine will reboot after a sysprep image has been applied, which will result in the setup of the boot files when deploying a new machine.

Resolved Issues

The following is the list of issues that have been resolved in RayManageSofti in 11.0.

- There is no common naming convention for buttons. [RMS-362]
- The **Package installation summary** report in the **Reporting** snap-in contains an illogical **Install Policy** column. [RMS-648]
- After clicking on **Quantity of Install Failures** in the **Managed Device Summary** report, an incorrect is visible. [RMS-652]
- The incorrect path to the Windows Installer file is used after changing the name of the subfolder. [RMS-1084]
- The selector for Linux systems cannot be started. [RMS-1466]
- The **Check package states before adding a package to policy** option is not being considered. [RMS-1617]
- The **CLOSE** button in the additional info area of the **License Editor** is not changing to a **CANCEL** button after editing the value of a custom property. [RMS-1643]
- When changing a custom property type to File, the **properties edit** window will not be closed, the value of **Type** will not be changed and the console will crash after clicking on the **OK** button in the **properties edit** window and on the **YES** button in the warning that will pop up. [RMS-1648]
- In the **Edit Properties of package** window of the **Policy Editor** some changes are saved even though **DISCARD** has been selected. [RMS-1779]
- The **Adoption Summary** drilldown from the **Adoption Status Details** fails to find the report. [RMS-1826]
- The duplex connection between the Distribution Server and the Administration Server is stopped after the connection has been lost. [RMS-2414]
- If a caption in the AD policy editor is too long it is cutted. [RMS-2511]
- There are multiple typos within the RayManageSofti console. [RMS-2514]
- There is no error message informing about the missing prerequisite if there is an older version than .NET 4.5.2 installed. [RMS-2543]
- Some reports are freezing after refreshing the window. [RMS-2546]
- There are cases where abbreviations are used in the GUI instead of the official names of certain products.. [RMS-2564]
- A rerun of the **Discovery** wizard does not offer the DHCP server value. [RMS-2566]
- When executing RWI using the classesFile an unhandled exception error might occur. [RMS-2570]
- An active `.ndc` whitelist might under certain circumstances lead to calls of the `ndlaunch.exe` being blocked. [RMS-2571]
- After deleting the search box content the title is still highlighted. [RMS-2572]

- The RayManageSofti console crashes when clicking clear after selecting packages in **License counting** -> **New License...** . [RMS-2575]
- Packages which have been removed or deleted are still shown on the **Newest packages** list. [RMS-2581]
- Hotfix #8504 does not work for workgroup machines. [RMS-2583]
- Analyzing and importing `.rpm` files into the Software Library will lead to a broken PackagesInSoftwareLibrary view in the database. [RMS-2587]
- The startup of the remote console might be interrupted by an error message which informs about a missing PackageStore snapin. [RMS-2593]
- Missing snap-in `.dlls` are not logged in the log file. [RMS-2594]
- The removal of the license leads to a crash of the RayManageSofti console. [RMS-2596]
- There is a typo in the license dialog. [RMS-2602]
- A missing AssetManagement error message might occur on startup of the direct or the remote console. [RMS-2603]
- When clicking on the **Distribution server status** tile the SnapinHost view is displayed. [RMS-2608]
- Scanned inventory data is not being imported correctly. [RMS-2617]
- A faulty DatabaseConnectionString leads to a console crash. [RMS-2630]
- A stopped SQL server leads to a console crash. [RMS-2631]
- It is not possible to use sudo for login as remote execution task on remote Linux and Unix devices. [RMS-2636]
- The **New Asset...** button does not work. [RMS-2638]
- The edition of properties is not working properly. [RMS-2640]
- The tabs on the **Reporting** snapin are not correctly formatted into capital letters. [RMS-2641]
- The report tiles in the **Reporting** snapin are not formatted correctly. [RMS-2642]
- When using the exclude empty policy filter RayManageSofti also filters out policies which only contain one scheduler. [RMS-2645]
- Calling the **Asset Manager** leads to a crash of the RayManageSofti console. [RMS-2649]
- When renaming a folder, the sections and keys are removed from the preference file located in this folder. [RMS-2656]
- A newly added policy is not displayed at the list of all policies. [RMS-2661]
- It is not possible to save the change when selecting the Inheriting from global configuration checkboxes and excluding some architectures, operating systems, or languages. [RMS-2663]
- The `mgsreservice.exe` is not working on some machines due to the interactive flag. [RMS-2665]
- A folder structure that has been created on the **Destination** page of the **New Project** wizard is lost when returning to the **Destination** page using the **< Back** button. [RMS-2667]
- The messaging client might stop on Windows Server 2008 R2 and Windows Server 2012 R2 due to an unhandled exception error. [RMS-2684]

- The SWID tags for non-Windows managed devices need to be updated. [RMS-2687]
- There are multiple typos in the **Package Editor**. [RMS-2692; RMS-2693; RMS-2694; RMS-2695; RMS-2696; RMS-2697; RMS-2698; RMS-2700; RMS-2702; RMS-2705; RMS-2707; RMS-2708; RMS-2718; RMS-2719]
- For non-Windows Managed Devices version number displayed in **General** is not correct. [RMS-2915]
- The **Packages Summary** option in the context menu links to an old report and shows an error page. [RMS-2818]
- The input validation in the phone input box of the **Vendor Editor** is faulty. [RMS-2926]
- Adding at least one property to an asset leads to an error message. [RMS-2927]
- The web reporting has not been migrated to the latest version of the common library. [RMS-2933]
- The `reboot.exe` process is not starting on Windows 7 managed devices. [RMS-2945]
- An error occurs when writing a number into the **Number of commands to execute in parallel** field. [RMS-2945]
- For some VM hosts cluster information are missing. [RMS-2952]
- When a number is entered into Number of commands to execute in parallel, an error occurs. [RMS-2955]
- The **Run task as soon as possible after a scheduled start is missed** option is not active by default. [RMS-2957]
- There are certain circumstances which might lead to a database not being correctly detected by oratrack. [RMS-2968]
- The launch condition regarding .NET Framework 4.5.2 is incorrect and is not able to identify the version 4.5.1. [RMS-2974; RMS-3083]
- After closing the wizard which has been used to add a bulletin to a policy, the bulletin status will not be changed to approved even though there was a success message. [RMS-2976]
- The asset management does not change the vendor icon. [RMS-2977]
- When using local remote execution there is a wrong exit code. [RMS-2980]
- There is a wrong picture in the **Messaging** chapter of the User guide. [RMS-2992]
- Instead of showing an exception infrastructure data continues loading indefinitely when the OS deployment is not installed. [RMS-3003]
- When doing a rerun on a task one task will be in the status **Waiting** and one task will be in the status **Pending**. [RMS-3019]
- There is a performance issue with the Tasks snap-in. [RMS-3020]
- There is currently no way to add Solaris packages as external installers. [RMS-3021]
- There is an incorrect label for the trigger delays in the Automation Rule wizard. [RMS-3022]
- The refresh hotkey **F5** is not working. [RMS-3023]
- An incorrect icon is being used for the **Update Required Patches** option. [RMS-3058]
- The infrastructure overview header buttons are not working. [RMS-3080]

- The destination folder name is not changed after changing the data information. [RMS-3090]
- After a manual installation on a Managed Device, there is an issue with the selector components after trying to detect the platform. [RMS-3102]
- The `ndtrack.sh` does not work properly when trying to retrieve the second username and password from the `credstorefile`. [RMS-3113]
- Instead of the MacOS version the Kernel version is shown as operating system. [RMS-3119]
- The Inventory Overview reports are not available on SSRS version lower than 2014. [RMS-3125]
- Connections might fail due to a nullpointer error when using RIU. [RMS-3128]
- Creating a new MSI project adds a trailing space to the end of the **Package name** and the **Application name** field values. [RMS-3140]
- During uninstallation, if a popup message is shown which prompts for a reboot, the uninstallation cannot be completed silently.. [RMS-3150]
- The **Back** button in the RayVentory Portal user interface is not working. [RMS-3151]
- In the OS connections in RayVentory Portal there are rows which are invisible. [RMS-3154]
- RayVentory Portal discovery will take the string from the Active Directory field and append the field to the computer name. [RMS-3161]
- There is a typo in the progress bar of the security manager. [RMS-3167]
- The 10.60.2733.0 version of the **Managed Device Adoption** package does not include the MAnageSoft for Linux (i282) Managed Devices package as a dependency. [RMS-3171]
- There is an issue when trying to import the installation logs. [RMS-3177]
- After booting the OS image for the first time, in some environments, the postwork is starting too early while the network is not yet ready and therefore the postwork fails. [RMS-3185]
- It is not possible to add an organizational unit, domain, or site to a group policy. [RMS-3194]
- The RayManageSofti web styles are stored in the wrong directory. [RMS-3196]
- The **Populate Active Directory with OUs and computers according to plan** option is missing. [RMS-3206]
- There is a typo in the screenshots which are referring to the import of site information. [RMS-3255]

Known Issues

For a list known issues in RayManageSofti refer to the Raynet [Knowledge Base](#). If there are any known issues, the respective information can be found here and will be kept up-to-date.

RayVentory System Requirements

This section describes the compatibility of RayVentory 11.0.

Hardware Requirements

RayVentory Server

- Minimum RAM: 2 GB
- Recommended RAM: 4 GB or higher
- Minimum disk space 8 GB

RayVentory Server (1 - 4.000 devices)

- Dual Core CPU
- 8 GB RAM
- 60 GB disk space for OS
- 40 GB disk space for database

RayVentory Server (4.001 - 10.000 devices)

- Dual Core CPU
- 16 GB RAM
- 60 GB disk space for OS
- 100 GB disk space for database

RayVentory Portal

- Minimum RAM: 2 GB
- Recommended RAM: 4 GB or higher
- Minimum disk space: 2 GB

Prerequisite Software

The table below describes the supported operating systems and software prerequisites of RayManageSofti 11.0 *infinity* at the time of release.

Component	Operating system	Prerequisite software
RayVentory Server	<ul style="list-style-type: none"> Windows 2016 Server Windows 2012 R2 Server Windows 2012 Server Windows 2008 R2 Server x64 Windows 2008 Server x86 SP2 Windows 2008 Server x64 SP2 	<ul style="list-style-type: none"> .NET Framework 4.5.2 PowerShell 3 SQL Server 2008 - 2016 Express or higher edition Microsoft Internet Information Services 6.0 to 8.5
RayVentory Portal	<ul style="list-style-type: none"> Windows 2016 Server Windows 2012 R2 Server Windows 2012 Server Windows 2008 R2 Server x64 Windows 2008 Server x86 SP2 Windows 2008 Server x64 SP2 Windows 10 Windows 10 x64 Windows 8.1 Windows 8.1 x64 Windows 8 Windows 8 x64 Windows 7 Windows 7 x64 	<ul style="list-style-type: none"> .NET Framework 4.5.2 Microsoft Internet Information Services 6.0 to 8.5
RayVentory for OS Inventory (Agentless inventory)	<ul style="list-style-type: none"> Windows 2016 Server Windows 2012 R2 Server Windows 2012 Server Windows 2008 R2 Server Core Windows 2008 R2 Server Windows 2008 Server Core Windows 2008 Server Windows 2008 Server Core x64 	<ul style="list-style-type: none"> Internet Explorer 7.0 to 11.0 (Windows platforms only) Java SE Runtime Environment (build 1.6.0) (Mac OS X agent inventories only)

	<ul style="list-style-type: none"> • Windows 2008 Server x64 • Windows 10 • Windows 10 x64 • Windows 8.1 • Windows 8.1 x64 • Windows 8 • Windows 8 x64 • Windows 7 • Windows 7 x64 • Windows Vista • Windows Vista x64 • RedHat Linux 8 and 9 • RedHat Enterprise Linux 3, 4, 5, 6, 6.1 • SuSE Professional/OpenSuSE 9, 10, 11 • SuSE Enterprise Server (SLES) 9, 10, 11 • Mac OS X 10.8, 10.9, 10.10 • Windows XP • Windows XP x64 • Windows 2003 R2 Server • Windows 2003 R2 Server x64 • Windows 2003 Server • Windows 2003 Server x64 • Solaris 9, 10, 11 (Intel) • Solaris 8, 9, 10, 11 (SPARC) • CentOS 6.x, 7.x • Fedora 21 • AIX 5.2, 5.3, 6.1, 7.1 • HP-UX 11.00, 11i, 11i v2, 11iv3 	
<p>RayVentory for vSphere Inventory</p>	<p><u>vSphere Components</u></p> <ul style="list-style-type: none"> • VMware ESX Server 3.0 and higher • VMware ESXi Server • VMware vCenter Server 	<ul style="list-style-type: none"> • .NET Framework 4.5.2
<p>RayVentory for Oracle Inventory</p>	<p><u>Database Components</u></p> <ul style="list-style-type: none"> • Oracle Database 9i 	<ul style="list-style-type: none"> • Java Runtime 1.4.2 - Java 8 • Any operating system supporting Oracle JRE

	<ul style="list-style-type: none">• Oracle Database 10g• Oracle Database 11g• Oracle Database 12c	
--	---	--



Warning:

Managed devices with operating systems which use OpenSSH 6.9 or higher are not supported!

RayManageSofti System Requirements

This section describes the compatibility of RayManageSofti 11.0 *infinity* products. If installing any components of RayManageSofti on the same server, the version of that component must also be 11.0 *infinity*.

Hardware Requirements

Basic Requirements

For devices running the Deployment Manager Administration Console or the Managed Device Selector

- Minimum screen resolution: 1024 x 768 pixels
- Minimum color settings: 8 bit (256 colors)

Core Servers

- Minimum RAM: 2 GB
- Recommended RAM: 4 GB or higher
- Minimum disk space: 1 GB

Reports Servers

- Minimum RAM: 2 GB
- Recommended RAM: 4 GB or higher
- Minimum disk space: 1 GB

Data Servers

- Minimum RAM: 2 GB
- Recommended RAM: 4 GB or higher
- Minimum disk space: 1 GB
 - Additional 40 GB for systems including OS Deployment Manager
 - Additional 30 GB for systems including Security Manager

Site Servers

- Minimum RAM: 1 GB
- Recommended RAM: 2 GB or higher
- Minimum disk space: 100 MB

Remote Console

- Minimum RAM: 1 GB
- Recommended RAM: 2 GB or higher
- Minimum disk space: 700 MB

Distribution Servers

- Minimum RAM: 1 GB
- Recommended RAM: 2 GB or higher
- Minimum disk space: 1 GB
 - Additional 20 GB for systems including OS Deployment Manager
 - Additional 30 GB for systems including Security Manager

Managed Devices

- Minimum RAM: 512 MB
- Recommended RAM: 1 GB or higher
- Minimum disk space: 300 MB

Prerequisite Software

The table below describes the supported operating systems and software prerequisites of RayManageSofti 11.0 *infinity* at the time of release.

Component	Operating system	Prerequisite software
Core Server	<ul style="list-style-type: none"> • Windows 2016 Server • Windows 2012 R2 Server • Windows 2012 Server 	<ul style="list-style-type: none"> • .NET Framework 4.0 • Jre-7u45-windows-i586 x86 • Internet Explorer 7.0 to 11.0

	<ul style="list-style-type: none"> • Windows 2008 R2 Server¹ • Windows 2008 Server SP1-SP2 • Windows 2008 Server x64 SP1-SP2¹ 	<ul style="list-style-type: none"> • Microsoft Internet Information Services 6.0 to 8.5 <p><u>For OS Deployment Manager:</u></p> <ul style="list-style-type: none"> • Microsoft Windows Automated Installation Kit (WAIK) with WinPE 3.0 or 3.1 for Windows versions from XP to 7 • Windows Assessment and Deployment Kit (ADK) with WinPE 3.1 or later for Windows 8, 8.1, 10 • Microsoft Windows Deployment Services (WDS - required only if you intend to use PXE support) • Microsoft Sysprep
Remote Console	<ul style="list-style-type: none"> • Windows 2016 Server • Windows 2012 R2 Server • Windows 2012 Server • Windows 2008 R2 Server • Windows 2008 Server SP1-SP2 • Windows 2008 Server x64 SP1-SP2 • Windows 10 • Windows 10 x64 • Windows 8.1 • Windows 8.1 x64 • Windows 8 • Windows 8 x64 • Windows 7 • Windows 7 x64 • Windows Vista • Windows Vista x64 	<ul style="list-style-type: none"> • .NET Framework 4.0 • Internet Explorer 7.0 to 11.0
Data Server	<ul style="list-style-type: none"> • Windows 2016 Server • Windows 2012 R2 Server • Windows 2012 Server • Windows 2008 R2 Server • Windows 2008 Server SP1-SP2 	<ul style="list-style-type: none"> • SQL Server 2008 • SQL Server 2008 R2 with Reporting Services • SQL Server 2012 with Reporting Services

	<ul style="list-style-type: none"> Windows 2008 Server x64 SP1-SP2 	<ul style="list-style-type: none"> SQL Server 2014 with Reporting Services SQL Server 2016 with Reporting Services SQL Server Tools and Workstation Components 2005, SQL Server 2008, SQL Server 2012, SQL Server 2014 Features: Client Tools Connectivity, Management Tools .NET Framework 4.0
Reports Server	<ul style="list-style-type: none"> Windows 2016 Server Windows 2012 R2 Server¹ Windows 2012 Server¹ Windows 2008 R2 Server¹ Windows 2008 Server SP1-SP2 Windows 2008 Server x64 SP1-SP2¹ 	<ul style="list-style-type: none"> .NET Framework 4.0 Reporting Services (same release as the database) Microsoft Internet Information Services 6.0 to 8.5
Site Server (OS Deployment Manager only)	<ul style="list-style-type: none"> Windows 2012 R2 Server Windows 2012 Server Windows 2008 R2 Server Windows 2008 Server SP1-SP2 Windows 2008 Server x64 SP1-SP2 <p><u>Supported, but not recommended:</u></p> <ul style="list-style-type: none"> Windows 10 Windows 10 x64 Windows 8.1 Windows 8 Windows 8 x64 Windows 7 Windows 7 x64 Windows Vista Windows Vista x64 	<ul style="list-style-type: none"> Windows Assessment and Deployment Kit (ADK) with WinPE 3.1 or later for Windows 8, 8.1, 10 Microsoft Windows Deployment Services (WDS) required only if you intend to use PXE support)

<p>Managed Device</p>	<ul style="list-style-type: none"> • Windows 2016 Server • Windows 2012 R2 Server • Windows 2012 Server • Windows 2008 R2 Server Core • Windows 2008 R2 Server • Windows 2008 Server Core • Windows 2008 Server • Windows 2008 Server Core x64 • Windows 2008 Server x64 • Windows 10 • Windows 10 x64 • Windows 8.1 • Windows 8.1 x64 • Windows 8 • Windows 8 x64 • Windows 7 • Windows 7 x64 • Windows Vista • Windows Vista x64 • RedHat Linux 8 and 9 • RedHat Enterprise Linux 3, 4, 5, 6, 6.1 • SuSE Professional/OpenSuSE 9, 10, 11 • SuSE Enterprise Server (SLES) 9, 10, 11 • Mac OS X 10.8, 10.9, 10.10 • Windows XP² • Windows XP x64² • Windows 2003 R2 Server² • Windows 2003 R2 Server x64² • Windows 2003 Server² • Windows 2003 Server x64² • Solaris 9, 10, 11 (Intel)² • Solaris 8, 9, 10, 11 (SPARC)² • CentOS 6.x, 7.x² 	<ul style="list-style-type: none"> • Internet Explorer 7.0 to 11.0 (Windows platforms only) • Java SE Runtime Environment (build 1.6.0) (Mac OS X only)
------------------------------	---	---

	<ul style="list-style-type: none"> • Fedora 21² • AIX 5.2, 5.3, 6.1, 7.1² • HP-UX 11.00, 11i, 11i v2, 11iv3² 	
<p>Snapshot Wizard</p>	<ul style="list-style-type: none"> • Windows 2016 Server • Windows 2012 R2 Server • Windows 2012 Server • Windows 2008 R2 Server • Windows 2008 Server • Windows 2008 Server x64 • Windows 10 • Windows 10 x64 • Windows 8.1 • Windows 8.1 x64 • Windows 8 • Windows 8 x64 • Windows 7 • Windows 7 x64 • Windows Vista • Windows Vista x64 	
<p>Distribution Server</p>	<ul style="list-style-type: none"> • Windows 2016 Server • Windows 2012 R2 Server • Windows 2012 Server • Windows 2008 R2 Server Core • Windows 2008 R2 Server • Windows 2008 Server Core • Windows 2008 Server • Windows 2008 Server Core x64 • Windows 2008 Server x64 <p><u>Supported, but not recommended:</u></p> <ul style="list-style-type: none"> • Windows 10 • Windows 10 x64 • Windows 8.1 • Windows 8.1 x64 	<ul style="list-style-type: none"> • Jre-7u45-windows-i586 x86

	<ul style="list-style-type: none"> • Windows 8 • Windows 8 x64 • Windows 7 • Windows 7 x64 	
<p>Inventory</p>	<ul style="list-style-type: none"> • Windows 2016 Server • Windows 2012 R2 Server • Windows 2012 Server • Windows 2008 R2 Server Core • Windows 2008 R2 Server • Windows 2008 Server Core • Windows 2008 Server • Windows 2008 Server Core x64 • Windows 2008 Server x64 • Windows 2003 R2 Server • Windows 2003 R2 Server x64 • Windows 2003 Server SP2 • Windows 2003 Server x64 SP2 • Windows 10 • Windows 10 x64 • Windows 8.1 • Windows 8.1 x64 • Windows 8 • Windows 8 x64 • Windows 7 • Windows 7 x64 • Windows Vista • Windows Vista x64 • Windows XP Professional • Windows XP Professional x64 • Windows XP Home • RedHat Linux 8 and 9 • RedHat Enterprise Linux 6.x, 7.x • CentOS 6.x, 7.x • Fedora 21 	<ul style="list-style-type: none"> • Java SE Runtime Environment (build 1.6.0) (Mac OS X only)

	<ul style="list-style-type: none"> • SuSE Professional/OpenSuSE 9, 10, 11 • SuSE Enterprise Server (SLES) 9, 10, 11 • Solaris 9, 10, 11 (Intel) • Solaris 8, 9, 10, 11 (SPARC) • Mac OS X 10.8, 10.9, 10.10 • AIX 5.2, 5.3, 6.1, 7.1 • HP-UX 11.00, 11i, 11i v2, 11i v3 	
--	--	--



Warning:

Managed devices with operating systems which use OpenSSH 6.9 or higher are not supported!

¹ Requires IIS to run in 32 bit mode

² Advanced support

Compatibility

This section describes the compatibility of RayManageSofti 11.0 *infinity* products. If installing any components of RayManageSofti on the same server, the version of that component must also be 11.0 *infinity*.

Compatible Components

Versions of distribution servers and managed devices that can be managed by Deployment Manager 11.0 *infinity*:

Component	Compatible versions
Deployment Manager for distribution servers	10.x
Deployment Manager for managed devices (Windows)	10.x
Deployment Manager for managed devices (Linux)	10.x
Deployment Manager for managed devices (Solaris)	10.x
Deployment Manager for managed devices (Mac OS X)	10.x
Deployment Manager for managed devices (AIX)	10.x
Deployment Manger for managed devices (HP-UX)	10.x

Versions of distribution servers and managed devices that can be managed by OS Deployment Manager 11.0 *infinity* and Security Manager 11.0 *infinity*:

Component	Compatible versions
Deployment Manager for distribution servers	10.x
Deployment Manager for managed devices (Windows)	10.x

Upgrading from Earlier Releases

The last version before this release was 10.4; therefore, this upgrade path is regarded as the RMS/RV standard upgrade procedure. To upgrade from releases earlier than 10.4, please consult your Raynet support representative.

Please note that the system requirements have changed since the last release. Make sure to meet the system requirements during each step of the migration process to ensure a stable system status at all times.

Additional Information

Visit www.RayManageSofti.com for further information on RayManageSofti, and take a look at the additional resources available at the Knowledge Base: <http://knowledgebase.RayManageSofti.com>.

Raynet is looking forward to receiving your feedback from your RayManageSofti experience. Please contact your Raynet service partner or use our [Support Panel](#) to add your ideas or requirements to the RayManageSofti development roadmap!

More information on RayVentory can be found in the *Release Notes with Technical Specifications* for RayVentory.

RayManageSofti is part of the RaySuite

More information online
www.raynet.de



Raynet GmbH
Technologiepark 20
33100 Paderborn, Germany
T +49 5251 54009-0
F +49 5251 54009-29
info@raynet.de

www.raynet.de