

Press Release

Safety via drag and drop

Jetter AG
Graeterstrasse 2
71642 Ludwigsburg, Germany

Phone +49 (0) 7141 2550-0
Fax +49 (0) 7141 2550-425
info@jetter.de
www.jetter.de

Contact person
Jochen Weyershäuser

Direct dial
Phone 462 | Fax 484

E-mail
pr@jetter.de

Date
July 05, 2017

Safely Controlling Machines and Plants

Safety PLCs of the JetSafeControl series by Jetter AG make implementing safe drives as easy as a walk in the park - all major safety functions have already been integrated into the firmware of this controller series.

Furthermore, the software tool JetSafe lets you adapt the safety functions to the individual safety concept, and enhance them.

In JetSafe the corresponding sensors and functions of a machine are assigned to inputs/outputs of the devices and the safety PLC. All major control devices and sensors used in safety technology, such as light curtains, door contacts, enabling keys, emergency stop devices, etc. are preconfigured and can be selected by clicking the corresponding icon. In the function chart the monitoring functions (SS1, SS2, SOS, SLA, SLS, SLP, SDI, SSM) are then linked with logic operations. This can be done on the programming interface quickly and easily just by using drag & drop without having to write any program code.

Stops, speeds, accelerations, positions, ranges and directions of several axes are monitored as regards their relation to each other. These functions can directly be parameterized in JetSafe in a context-oriented way.

Convenient engineering and operation

JetSafe automatically creates a terminal diagram and links the elements with the safety module to which they are connected physically. Safety modules that have already been tested are managed in a library, and can be used for other drives or projects. In addition, the library lets you define modules of your own, protect them or save them for future reuse. Once the safety controller, as well as the sensors and actuators have been configured, JetSafe automatically creates the wiring diagram.

The controller series JetSafeControl comprises four models ranging from 100x115x45 mm to 100x115x122.5 mm which are approved up to PLe EN 13849, or SIL3 EN 61508. All drive monitoring functions to EN 61800-5-2 are supported. They feature up to 58 safe digital inputs, 22 safe digital outputs, up to 6 signaling outputs, as well as a safe relay output for isolating circuits.



Fig. 1: Controllers of the JetSafeControl series let you easily solve typical safety tasks thanks to their integrated safety functions.

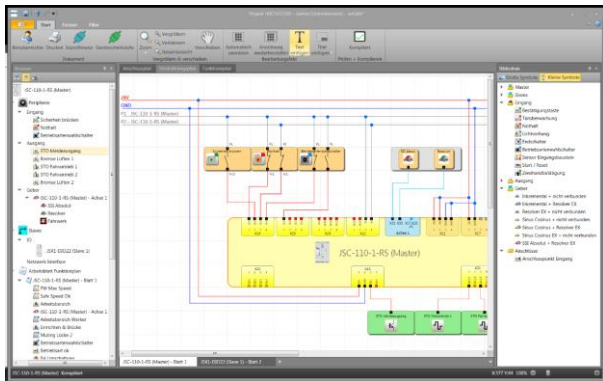


Fig. 2: Extensive libraries and wizards provided by the JetSafe software support you in making all required settings.

Reprint is free of charge. Copy requested.

Jetter AG at a glance

For decades, the name Jetter AG has stood for highest demands on automation solutions that are used in a wide range of industrial and mobile automation sectors.

Products and components by Jetter AG stand out thanks to their high degree of system integrity and diversity. Our in-house R&D departments (hardware and software), as well as our production plants in Germany allow us to always act in a quick and flexible manner. This, combined with a comprehensive range of Professional Services, enables us to put almost any customer request into practice. In Industrial Automation Jetter AG is focusing on selected industries. Highly customized solutions contributing to decisive advantages in our customers' business environment put them into a position to produce state-of-the-art machines and plants.

In Mobile Automation Jetter AG develops and manufactures highly complex and robust automation concepts for controlling a wide variety of functions in municipal, fire-fighting, and agricultural vehicles. Thus, permanent availability of vehicles and implements is ensured.